

HEAD QUARTERS F O R HIND QUARTERS

18th Annual

Angus Bull Sale

Saturday, March 15, 2014, 1:00 PM
Rockingham County Fairgrounds • Harrisonburg, Virginia

Benfield Angus and White Ridge Angus



18th Annual

Angus Bull Sale

Saturday, March 15, 2014, 1:00 PM
Rockingham County Fairgrounds, Harrisonburg, Virginia

Sale Day Phones:

Don -540-245-0003 • Bobby -540-850-0266

Barn Office -540-434-0005 • Settlement Desk -540-255-9678

Sale Staff

Bruce Miller, Auctioneer.....817-247-0115
Scott Weller.....540-294-0555
Jeff Marsh.....540-229-0754
Charlie Strickler540-718-7793

Sale Consultant

Chris Wojciechowski.....540-292-0841

Breed Representative

Virginia Angus Association.....540-337-3001

Sale Location

Rockingham County Fairgrounds are located off
Route 11, approximately 1.5 miles south of Exit 243
on Interstate 81.

Food

Complimentary beef barbecue lunch provided.

Lodging

Holiday Inn Express, Harrisonburg, Virginia
540-433-9999.
Ramada Inn, Harrisonburg, Virginia 540-434-9981.

EPD and Performance Information

EPD's are current as of February 16, 2014 and are
provided by the American Angus Association.
Complete performance and pedigree information is
available on request.

Terms

All animals sell under the standard terms and
conditions of the American Angus Association—see
www.angus.org. Announcements from the sale block
on sale day take precedence over information in the
catalog. All animals become the full responsibility of
the purchaser at the fall of the gavel.

Transportation and Insurance

Truckers believed to reliable will be on hand
to deliver purchases. Assistance in arranging
transportation of purchases is available. Insurance
can be purchased at the settlement desk.

Birth Weight and Calving Ease

A review of the "Across Breed EPDs" created by the
Meat Animal Research Center reveals that a +4 or
+5 BW EPD for Angus is equal to a "0" BW EPD for
most other breeds. While other breeds recommend
their "0" BW EPD bulls for use on heifers, we
recommend the +4 and above BW EPD Angus bulls
for use on cows. If you are selecting bulls to use on
cows, these bulls are generally more economical to
buy than the lower BW EPD bulls. If you are buying
bulls to breed to heifers, it is generally accepted in
the Angus breed that Angus bulls with BW EPDs of
+2.0 and less have acceptable calving ease potential
for heifers. Nevertheless, we recommend that these
bulls be sampled on heifers to determine their true
calving ease potential for your herd before breeding
to a large number of heifers.

Animal Health

All bulls are tested negative for Brucellosis and
TB. Health papers will be available for interstate
shipment.

Breeding Guarantee

Fertility- All bulls have passed semen tests and
breeding soundness examinations. Scrotal
measurements are available on request. All bulls
are fertility guaranteed as recommended by the
American Angus Association in the Sale Terms and
Conditions. Claims for nonbreeders must be made
promptly and within 4 months of the bull being put
in service and no later than December 31, 2014.

Genetic Defects

All bulls are free, by pedigree, of all genetic defects
that have DNA tests available that are monitored by
the American Angus Association.

Liability

Persons attend this sale at their own risk.

Catalog

Please bring your catalog to the sale. Extra copies are
limited and available only on request. Printing and
handling provided by Boelte Hall, Roeland Park, KS.

Benfield Angus & White Ridge Angus



March 1, 2014

Dear Friends,

It is our pleasure to welcome you to the 18th Annual Headquarters for Hindquarters Angus Bull Sale. Another long winter has added to the environmental and economic events that have challenged the expected expansion of cattle numbers, but we believe the future is bright for the industry.

On Saturday March 15th, we will offer an excellent group of deep, stout, heavy muscled bulls. These young sires comprise an outstanding offering of outcross genetics with growth and maternal value. They are the result of cattle that have been selected for generations to excel in a low-input environment.

At Benfield Angus and White Ridge Angus, selecting cattle is more than just reading numbers. In our quest for balanced trait cattle, we keep pressure on the necessary production traits of fertility, longevity, udder quality, disposition, structural soundness, production efficiency and fleshing ability. Our herds thrive on grass and grass hay. Calves are not creep fed to protect the value of maternal records. After weaning, the bulls are developed on their respective farms in large lots with plenty of room for exercise. They are self-fed a high-roughage, by-product ration and free-choice, long stem hay.

If you are looking for a bull that will add to the genetic base of your herd—a bull that is fertile, easy fleshing, and balanced trait with true muscle, give us a call and plan to attend our sale. We welcome your visit to our farms to view the cattle prior to March 13. After that date, the cattle will be available for inspection at the Rockingham County Fairgrounds. If you have any questions, give us a call. We look forward to seeing you on Saturday, March 15th.

Don and Bobby

Benfield Angus

Don and Juliana Benner

Deerfield, Virginia

540-939-4608

540-245-0003

don@benfieldangus.com

www.benfieldangus.com

White Ridge Angus

Bobby Grove

Somerville, Virginia

540-850-0266

Wrabobby@gmail.com

Please Bring Your Catalog To The Sale

www.benfield-whiteridge.com

Genetics to Build Efficient Cow Herds- and Some to Avoid.

Recent drought fueled liquidations have resulted in a national cowherd that is fewer in number than we have seen in decades. Combine these low inventories with record high prices, and it is easy to see why there are widespread predictions for increased heifer retention to help rebuild inventory. As herds are rebuilt, breeders will seek genetics to maximize profits.

Cattlemen nationwide are becoming more aware of input costs. Constantly rising costs of land, labor, feed, fuel, fertilizer, and equipment shrink profit margins. The October 2013 issue of the Angus Journal includes results of research reported by David Lalman from Oklahoma State University that show for every increase of 100 pounds in mature cow weight, you increase costs by more than \$40, yet increase calf value by less than \$10.

Many of the traits that are essential to building low input, maternally efficient cowherds are poorly evaluated by EPDs, traits like structural soundness, foot structure, udder quality, fleshing ability, fertility, and longevity. These traits are considered by many to be convenience traits, but at Benfield and White Ridge, these traits are considered essential. Our programs value these traits, and these essential traits will never be compromised to chase the widely popular \$Beef genetics.

\$Beef—The Wrong Index at the Wrong Time

The \$Beef Value Index has been the focused selection target of many breeders nationwide the past 10 years. The purpose of \$Beef is to help predict an animal's progeny for post weaning performance and carcass traits. As Sally Northcutt, Director of Genetic Research for the American Angus Association (AAA), said in the January 2013 issue of the Angus Journal, "\$Beef is geared toward calves with a terminal endpoint and no replacements retained". Terminal traits are antagonistic to maternal traits, so it should come as no surprise that selection for \$Beef has resulted in bigger framed, later maturing cattle with much greater mature body weight and increased maintenance costs. In addition, often times while chasing greater \$Beef numbers, fertility, structural soundness, udder quality, fleshing ability, and longevity—the very traits needed to build efficient and profitable cowherds—have suffered.

Marbling Levels and Sex Hormones are Intertwined

Marbling, which is the primary driver of quality in young cattle, is a strength of the Angus breed. It is a worthy goal to improve the ability of cattle to marble. To aid marbling predictions, ultrasound measurements for IMF from yearling bulls were first incorporated into the genetic evaluation for marbling in the 1990s. (Marbling scores are actual carcass measurements while intramuscular fat, or IMF, measurements are taken by ultrasound. They essentially measure the same trait.)

At the time, we were concerned about the validity of this practice because we knew that (1) testosterone is highly heritable, (2) testosterone levels vary greatly among yearling bulls, (3) testosterone has a negative impact on marbling, and (4) this negative impact is additive. We feared taking IMF measurements without concurrently measuring and adjusting for testosterone levels would prejudice the measurements and EPDs in favor of bulls that were low in testosterone and against bulls that were high in testosterone.

This is important because the economically relevant trait is marbling scores in steer progeny, not IMF scores in breeding cattle. We were told by John Crouch, the Director of Performance Programs at the AAA at the time, that there was scientific justification for using ultrasound IMF scores from breeding cattle to predict steer marbling scores. As the years went by, the database for IMF became dominated by ultrasound measurements from bulls and heifers with little contribution from actual carcass data. Our concerns grew. We recently requested that the AAA and Beef Improvement Federation provide the scientific support that justifies the practice of using ultrasound IMF measurements without adjusting for sex hormone levels.

Support for the Status Quo

It is well documented that bulls have less marbling than steers, and steers have less marbling than heifers. In addition, a 2008 research report, "National Cattle Evaluation System for Combined Analysis of Carcass Characteristics and Indicator Traits Recorded by Using Ultrasound in Angus Cattle" by MacNeil and Northcutt, reveals that the genetic correlation for IMF

between Angus bulls and heifers is .89, which is a very high correlation. This means that sire groups of bulls and heifers, when ranked for IMF, will rank about the same without dramatic re-rankings.

Animal scientists reasoned that since bulls and heifers have different hormones, and since bulls have less marbling than steers, and steers less than heifers, and since bulls and heifers were highly correlated for IMF, then sex hormones (testosterone and estrogen/progesterone) have little effect on sire group rankings for IMF and it is therefore valid to use IMF scores from bull and heifer ultrasound to predict marbling scores in steers.

This is the scientific support for using ultrasound IMF scores from bulls and heifers to predict steer marbling at harvest without adjusting for sex hormone impact. This logic is flawed. No research has ever been done to quantify the effects of sex hormones on marbling.

The Status Quo Logic is Flawed

A 2011 research summary from Jim Church at the University of Idaho shows that at harvest, steers castrated at 800 pounds have less marbling than steers castrated at weaning, which have less marbling than steers which were castrated at 200 pounds. Clearly, testosterone has impacted marbling scores based on the timing of castration. For male cattle, rankings for marbling, from most to least, would be: (1) early castrates, (2) weaning castrates, (3) late castrates, (4) low testosterone intact males (5) average testosterone intact males, (6) high testosterone intact males. So, it's not really three separate groups to evaluate—bulls/steers/heifers—it's just two, male cattle and female cattle. If it is proper to segregate bulls from steers in marbling evaluations, as the current system does, then it is also proper to separate high testosterone bulls from low testosterone bulls.

Sex Hormones Impact Marbling Similarly, not Differently

With regards to impact on marbling scores, testosterone and the combination of estrogen and progesterone are not widely different hormones. They are analogous hormones that are both anabolic steroids. Testosterone based implants and estrogen/progesterone based implants are both used in feedlot cattle to increase performance and muscle and both

are documented to decrease marbling. Since both testosterone and estrogen/progesterone are anabolic steroids, it makes perfect sense that sire groups of bulls and heifers are highly correlated for marbling because the impacts of sex hormones on marbling would be the same in bulls and in heifers; that is, low levels of sex hormones equals more marbling and high levels of sex hormones equals less marbling. In naturally occurring levels, it appears that testosterone has a more powerful negative effect on marbling scores than estrogen/progesterone.

Marbling in Steers is Economically Important, not Marbling in Breeding Cattle

Now, remember that the trait of economic importance is marbling levels in steer progeny, not in breeding cattle. In a 2002 study by Kemp, et al, "Genetic and Environmental Parameters for Steer Ultrasound and Carcass Traits," 2,855 Angus steers were measured for carcass and ultrasound traits. The genetic correlation between ultrasound IMF and carcass marbling was determined to be .90, or very high.

This means that ultrasound IMF and carcass marbling measure the same trait. As established by MacNeil, et al, in a 2010 article titled "Genetic Evaluation of Angus Cattle for Carcass Marbling Using Ultrasound and Genomic Indicators," the genetic correlation between bull IMF and steer marbling is determined to be .56, or moderately correlated.

Many genes affect the inheritance of marbling, so we would expect the correlation to be positive. It is not highly positive (like the correlation between bulls and heifers) because the impact of sex hormones was not taken into account regarding the relationship between bulls and steers.

In addition, the MacNeil study was a population database study, not a controlled research experiment. This means the data evaluated in the study was collected over a period of many years. Since IMF selection the past 10+ years has occurred independent of selection for marbling in steers, (due to the increased use of ultrasound and the concurrent selection for low sex hormone breeding cattle) it is likely that this relationship has become more unhinged during the past decade and the current correlation between bull IMF and steer marbling is less than .56.

Continued on Page 46

Reference Sire



Apex Windy 078

Calved 1/14/08

Bull 16237970

Tattoo: 078

H A R B Windy 702 JH
#14321158 H A R B Black Lady 073 J H

Apexette Lucy 6037
15920940 Apexette Lucy 1064

A A R Windy Ridge 362
A A R Lady Kelton 2170
H A R B Cincha 829
H A R B Black Lady G67 J H

Connealy Forefront
Apexette Delia 6044
Apex Travel Trend 079
Apexette Lucy 2035

BEPD	
+3.9	.93
WEPD	
+72	.89
YEPD	
+113	.81
MILK	
+39	.48

★ We became intrigued with 078 after seeing him in stud in Montana. He is one of the most phenotypically impressive bulls we have seen—sound structured, wide based, heavy muscled, and big ribbed, with tremendous balance and eye appeal. We were convinced we needed to use him after seeing his impressive progeny, both bulls and heifers. His sons were stout, masculine, growthy prospects while his heifers were roomy, feminine, and attractive. The outcross genetics he provides only makes him more appealing.



WRA Windy A1

Calved 1/23/13

Bull 17645809

Tattoo: A1

Apex Windy 078
16237970 H A R B Windy 702 JH
Apexette Lucy 6037

W R A Ann 28W
16465313 W R A Ann 28P

A A R Really Windy 1205
H A R B Black Lady 073 J H
Apex Mtn Front 044
Apexette Lucy 1064

Nichols Extra H6
Nichols Black Heirress F346
CAR Duke 104
W R A Ann 28L

BEPD		BW	
+4.0	.37	95	
WEPD		205	
+60	.29	643	
YEPD		WR	
+104	.28	105	
MILK		365	
+33	.18	1275	
		YR	
		109	

★ This high growth (105 WWR, 109 YWR) son of Apex Windy 078 is a maternal brother to WRA Game Day Y7, who topped our 2012 sale at \$12,000, selling to Hinman Angus of Malta, Montana. Their productive dam, 28W, records 3 calves @ 106 WWR with a 357 day calving interval. A1 should sire added frame, muscle, and performance while maintaining superior maternal genetics.

Herd Bull Prospects



**HEAD
QUARTERS
2**

WRA Windy A15

Calved 2/2/13

Bull +17645846

Tattoo: A15

Apex Windy 078
16237970

H A R B Windy 702 JH
Apexette Lucy 6037

W R A Eileen Bar 115P
14842003

CAR Duke 104
W R A Eileen Bar 115M

A A R Really Windy 1205
H A R B Black Lady 073 J H
Apex Mtn Front 044
Apexette Lucy 1064

Car Tracker 904
C A R Miss Raindancer 421
W R A M0J0 K5
W R A Eileen Bar 114J

BEPD	BW
+1.9 .38	87
WEPD	205
+58 .31	549
YEPD	WR
+98 .31	95
MILK	365
+33 .19	1224
YR	YR
	101

★ Lot 2 is our pick of 5 flush brothers sired by 078 and out of 115P, the dam of Mirror Image T10, Vindicator, and Walker. He combines the best traits found in the flush brothers. A15 is a moderate framed, easy fleshing, big bodied prospect with added base width, testicle size, and post weaning performance. We expect him to sire moderate, roomy, easy keeping daughters and stout sons with performance. Lot 2 represents an opportunity to own a great young bull that is a maternal brother to two AI stud bulls.

★ Selling 2/3 Interest and Full Possession

**HEAD
QUARTERS
3**

WRA Windy A14

Calved 2/2/13

Bull +17645845

Tattoo: A14

Apex Windy 078
16237970

H A R B Windy 702 JH
Apexette Lucy 6037

W R A Eileen Bar 115P
14842003

CAR Duke 104
W R A Eileen Bar 115M

A A R Really Windy 1205
H A R B Black Lady 073 J H
Apex Mtn Front 044
Apexette Lucy 1064

Car Tracker 904
C A R Miss Raindancer 421
W R A M0J0 K5
W R A Eileen Bar 114J

BEPD	BW
+1.1 .38	78
WEPD	205
+58 .31	508
YEPD	WR
+98 .31	88
MILK	365
+33 .19	1183
YR	YR
	97

★ Lot 3 is the most similar of the flush brothers to Lot 2. He is moderate framed and well balanced, with outstanding scrotal development and skeletal design. A14 had the bad fortune to nurse a poor recipient mother, but he has really developed after weaning. He could prove to be the best of the flush.

Heavy Muscled Flush Mates


4
HEAD
QUARTERS
HEAD
QUARTERS

WRA Windy A4

Calved 1/26/13

Bull +17645828

Tattoo: A4

Apex Windy 078
16237970

H A R B Windy 702 JH
Apexette Lucy 6037

W R A Eileen Bar 115P
14842003

CAR Duke 104
W R A Eileen Bar 115M

A A R Really Windy 1205
H A R B Black Lady 073 J H
Apex Mtn Front 044
Apexette Lucy 1064

Car Tracker 904
C A R Miss Raindancer 421
W R A M0J0 K5
W R A Eileen Bar 114J

BEPD	BW
+2.7 .38	90
WEPD	205
+58 .31	528
YEPD	WR
+95 .31	91
MILK	365
+33 .19	1154
YR	95

★ Lot 4 is another impressive member of the 078 X 115P flush. He is the heaviest boned and heaviest muscled of the full brothers. Very moderate framed and big topped, A4 will work best for breeders wanting to moderate frame and add muscle while maintaining outstanding maternal value and production traits.

5
HEAD
QUARTERS
HEAD
QUARTERS

WRA Windy A9

Calved 1/30/13

Bull +17645842

Tattoo: A9

Apex Windy 078
16237970

H A R B Windy 702 JH
Apexette Lucy 6037

W R A Eileen Bar 115P
14842003

CAR Duke 104
W R A Eileen Bar 115M

A A R Really Windy 1205
H A R B Black Lady 073 J H
Apex Mtn Front 044
Apexette Lucy 1064

Car Tracker 904
C A R Miss Raindancer 421
W R A M0J0 K5
W R A Eileen Bar 114J

BEPD	BW
+2.0 .38	89
WEPD	205
+61 .31	581
YEPD	WR
+101 .31	101
MILK	365
+33 .19	1245
YR	103

★ Here is the high performing bull from the mating of 078 to 115P. Lot 5 will work best for breeders seeking to add a notch of frame size with extra muscle and performance. A9 shares the balance and sound skeletal design of his flush brothers.

Herd Bulls By Apex Windy 078



6
HEAD
QUARTERS
HEAD
QUARTERS

Benfield Windy A17

Calved 2/10/13

Bull 17669861

Tattoo: A17

Apex Windy 078

16237970

H A R B Windy 702 JH

Apexette Lucy 6037

Benfield Kona 34

Benfield Queen L 8559

#16204625

Benfield Queen L 9955

A A R Really Windy 1205
H A R B Black Lady 073 J H
Apex Mtn Front 044
Apexette Lucy 1064

H A Intrepid 6207
B F F Queen L 7724
Gardens Prime Time
B F F Queen L 7723

BEPD	BW
+4.8 .37	95
WEPD	205
+59 .28	732
YEPD	WR
+101 .28	105
MILK	365
+30 .17	1348
	YR
	110

★ Here is a true herd bull that is easy to like and quickly sorts as one of the best multi-dimensional bulls of this year's sale offering. He is one of the top performing bulls for gain and recorded the 2nd highest yearling weight. He is very wide based and heavy muscled. In addition, he is structurally correct and free moving. His Kona dam stems from our productive and fertile Queen L family. She is a pathfinder with weaning record of 107 on four calves.

★ Selling two thirds interest and full possession.

7
HEAD
QUARTERS
HEAD
QUARTERS

Benfield Windy A24

Calved 2/12/13

Bull 17669865

Tattoo: A24

Apex Windy 078

16237970

H A R B Windy 702 JH

Apexette Lucy 6037

Benfield Kona 34

Benfield Cassander 7471

15847942

Benfield Cassander 1103

A A R Really Windy 1205
H A R B Black Lady 073 J H
Apex Mtn Front 044
Apexette Lucy 1064

H A Intrepid 6207
B F F Queen L 7724
Basin Rainmaker D S 380U
Benfield Cassander 7818

BEPD	BW
+3.4 .37	90
WEPD	205
+59 .28	728
YEPD	WR
+95 .28	104
MILK	365
+29 .18	1258
	YR
	103

★ A ¾ brother to Lot 6, Benfield Windy A24 is another stout 078 son with great weaning and yearling performance and added muscle. His Kona dam has recorded 5 calves at weaning for a 104 ratio and his pathfinder grandam has recorded 8 calves for a 105 ratio and is the dam of Lot 58. Use him to add muscle and weaning weight and keep the females for replacements as well. A maternal brother by Tracker 458 sold for \$6600 in our 2012 bull sale.

Herd Bulls by Apex Windy 078

8
HEAD
QUARTERS

Benfield Windy A18

Calved 2/10/13

Bull 17669862

Tattoo: A18

Apex Windy 078

16237970

H A R B Windy 702 JH

Apexette Lucy 6037

Benfield Substance 8506

Benfield Zara 058

16759661

Benfield Zara 411

A A R Really Windy 1205
H A R B Black Lady 073 J H
Apex Mtn Front 044
Apexette Lucy 1064

H A Image Maker 0415
Benfield Edella 1105
Benfield Kona 34
Benfield Zara 8844

Tattoo: A18	
BEPD	BW
+5.1 .37	96
WEPD	205
+61 .28	705
YEPD	WR
+97 .28	101
MILK	365
+30 .17	1223
	YR
	100

★ Benfield Windy A18 is a robust, moderate framed and thick muscled Windy 078 with above average performance who tracks wide and easy. His impressive Substance x Kona dam is one of our promising young females. A maternal brother by Final Answer sold for \$4000 last year.

9
HEAD
QUARTERS

Benfield Windy A05

Calved 2/6/13

Bull 17669856

Tattoo: A05

Apex Windy 078

16237970

H A R B Windy 702 JH

Apexette Lucy 6037

CAR Tracker 458

Benfield Edella 083

16874301

Benfield Edella 282

A A R Really Windy 1205
H A R B Black Lady 073 J H
Apex Mtn Front 044
Apexette Lucy 1064

Car Tracker 904
CAR Miss Marie 271
Jauer Java 8136
Benfield Edella 7813

Tattoo: A05	
BEPD	BW
+2.8 .36	85
WEPD	205
+60 .27	723
YEPD	WR
+107 .22	104
MILK	365
+30 .16	1361
	YR
	111

★ Kendall has two cows and each has now raised the high yearling weight bull at Benfield. Last year a Regis son out of her Substance daughter was the top yearling bull and sold for \$8000. This year her Tracker 458 cow has produced the high gaining and high yearling weight bull on test. Benfield Windy A05 is an attractive, deep bodied and long sided bull with breed leading performance from nine generations of Benfield breeding. His dam is a model Angus cow of moderate frame with a perfect udder. Her yearling ratio on two calves is 107.

10
HEAD
QUARTERS

Benfield Windy A32

Calved 2/13/13

Bull 17669868

Tattoo: A32

Apex Windy 078

16237970

H A R B Windy 702 JH

Apexette Lucy 6037

Benfield Substance 8506

Benfield Elbora 065

16759663

Benfield Elbora 655

A A R Really Windy 1205
H A R B Black Lady 073 J H
Apex Mtn Front 044
Apexette Lucy 1064

H A Image Maker 0415
Benfield Edella 1105
Stevenson Rainmaker L406
Benfield Elbora 230

Tattoo: A32	
BEPD	BW
+1.6 .37	80
WEPD	205
+62 .28	700
YEPD	WR
+101 .28	100
MILK	365
+31 .17	1242
	YR
	101

★ This Windy 078 x Substance cross is another good performance bull with muscle from a great cow family. His dam and grandam are attractive and productive cows. Lot 10 is will increase weaning weights and sire superior females as replacements.

11
HEAD
QUARTERS

Benfield Windy A10

Calved 2/7/13

Bull 17669858

Tattoo: A10

Apex Windy 078

16237970

H A R B Windy 702 JH

Apexette Lucy 6037

H A Image Maker 0415

Benfield Edella 081

+16761932

Benfield Edella 1105

A A R Really Windy 1205
H A R B Black Lady 073 J H
Apex Mtn Front 044
Apexette Lucy 1064

Hero 6267 of R R 2418
H A Rito Blackcap 9038
Jauer Java 8136
Benfield Edella 7813

Tattoo: A10	
BEPD	BW
+1.7 .36	80
WEPD	205
+62 .28	689
YEPD	WR
+96 .28	99
MILK	365
+31 .18	1145
	YR
	94

★ A10 is one of the lower birth weight sons of 078 from an Image Maker daughter of the Edella cow family. He is a long sided, clean-fronted, and smooth made individual with bred in maternal value.

Herd Bulls by Apex Windy 078



12
QUARTERS

Benfield Windy A26

Calved 2/14/13

Bull 17669866

Tattoo: A26

Apex Windy 078
16237970

H A R B Windy 702 JH

Apexette Lucy 6037

Benfield Queen L 9148

16472566

W R A Mirror Image T10

Benfield Queen L 623

A A R Really Windy 1205
H A R B Black Lady 073 J H
Apex Mtn Front 044
Apexette Lucy 1064

H A Image Maker 0415
W R A Eileen Bar 115P
S A V 8180 Traveler 004
Benfield Queen L 235

BEPD	BW
+1.1 .37	70
WEPD	WR
+64 .28	747
YEPD	YR
+107 .27	107
MILK	YR
+36 .17	365
	1315
	108

★ Take a look at this complete and balanced trait bull with a moderate birth weight EPD that racked up outstanding performance numbers. A slightly larger framed 078 son, this deep sided and long bodied herd sire is from a productive daughter of Mirror Image T10, who boasts 3 calves with a 106 weaning ratio.

13
QUARTERS

Benfield Windy A29

Calved 2/14/13

Bull 17669867

Tattoo: A29

Apex Windy 078
16237970

H A R B Windy 702 JH

Apexette Lucy 6037

Benfield Queen L 652

15555962

Stevenson Rainmaker L406

B F F Queen L 7723

A A R Really Windy 1205
H A R B Black Lady 073 J H
Apex Mtn Front 044
Apexette Lucy 1064

Basin Rainmaker D S 380U
JRS Enchantress 16A
W R A Treasure D1
Benfield Queen W79

BEPD	BW
+2.5 .37	79
WEPD	WR
+57 .28	205
YEPD	YR
+90 .27	694
MILK	YR
+31 .18	100
	365
	1198
	98

★ A29 is a balanced trait, multi-dimensional herd bull with a fault free design. His picture perfect dam is one of our best cows and a productive daughter of L406, who left us with many productive and long lasting females. As a moderate framed and moderate birth weight sire with performance and muscle, A29 will produce highly marketable feeder calves and prolific, fertile females.

Stylish Sons of 078



14
HEAD
QUARTERS

WRA Windy A10

Calved 1/27/13

Bull +17645858

Tattoo: A10

Apex Windy 078
16237970 H A R B Windy 702 JH
Apexette Lucy 6037
CAR Duke 104
W R A Sarah 139P
#14842008 W R A Sarah 139M

A A R Really Windy 1205
H A R B Black Lady 073 J H
Apex Mtn Front 044
Apexette Lucy 1064
Car Tracker 904
C A R Miss Raindancer 421
O C C Aristocrat 797A
W R A Sarah 137J

BEPD		BW
+2.3	.05	91
WEPD		205
+60	.05	568
YEPD		WR
+98	.05	100
MILK		365
+30	.05	1256
		YR
		100

★ We flushed 139P, the Pathfinder dam of our Topper U13 herd bull, to Apex Windy 078. The results were three outstanding herd sire prospects. Lot 14 is the highest performer of the three brothers, and he also possesses an abundance of style and balance. Breeders looking for performance with show winning style need look no further. A10 is your bull.
★ Selling 2/3 Interest and Full Possession.

15
HEAD
QUARTERS

WRA Windy A11

Calved 1/30/13

Bull +17645843

Tattoo: A11

Apex Windy 078
16237970 H A R B Windy 702 JH
Apexette Lucy 6037
CAR Duke 104
W R A Eileen Bar 115P
14842003 W R A Eileen Bar 115M

A A R Really Windy 1205
H A R B Black Lady 073 J H
Apex Mtn Front 044
Apexette Lucy 1064
Car Tracker 904
C A R Miss Raindancer 421
W R A M0JO K5
W R A Eileen Bar 114J

BEPD		BW
+1.7	.38	86
WEPD		205
+61	.31	612
YEPD		WR
+95	.31	106
MILK		365
+33	.19	1170
		YR
		96

★ This smooth made ET calf combines the maternal efficiency of his outstanding dam, 115P, with the performance and design of the popular Accelerated Genetics sire, Apex Windy 078. Lot 15 provides another opportunity to own a maternal brother to Vindicator at Select Sires, Walker at Genex, and the long time White Ridge herd sire, Mirror Image T10.

Maternal Brothers to Topper



16
HEAD
QUARTERS

WRA Windy A6

Calved 1/27/13

Bull +17645857

Tattoo: A6

Apex Windy 078
#16237970 H A R B Windy 702 JH
Apexette Lucy 6037

A A R Really Windy 1205
H A R B Black Lady 073 J H
Apex Mtn Front 044
Apexette Lucy 1064

W R A Sarah 139P
#14842008 CAR Duke 104
W R A Sarah 139M

Car Tracker 904
C A R Miss Raindancer 421
O C C Aristocrat 797A
W R A Sarah 137J

BEPD	BW
+2.3 .05	78
WEPD	205
+60 .05	558
YEPD	WR
+98 .05	100
	365
MILK	1196
+30 .05	YR
	100

★ A6 may well be the most complete of the flush brothers by 078 from 139P. He is a moderate framed, well balanced, big ribbed prospect with excellent muscle and base width. He should sire beautifully balanced, easy keeping daughters and growthy, stout made, fault free sons.

★ Selling 2/3 Interest and Full Possession.

17
HEAD
QUARTERS

WRA Windy A5

Calved 1/27/13

Bull +17645856

Tattoo: A5

Apex Windy 078
#16237970 H A R B Windy 702 JH
Apexette Lucy 6037

A A R Really Windy 1205
H A R B Black Lady 073 J H
Apex Mtn Front 044
Apexette Lucy 1064

W R A Sarah 139P
#14842008 CAR Duke 104
W R A Sarah 139M

Car Tracker 904
C A R Miss Raindancer 421
O C C Aristocrat 797A
W R A Sarah 137J

BEPD	BW
+2.3 .05	82
WEPD	205
+60 .05	554
YEPD	WR
+98 .05	100
	365
MILK	1149
+30 .05	YR
	100

★ Lot 17 is a smooth shouldered, extended fronted prospect from the mating of 078 to our Pathfinder Duke daughter, 139P. He provides outcross maternal performance genetics that are unrelated to most of the popular cattle in the Angus breed.

Reference Sires



Cole Creek Cedar Ridge 1V

Calved 3/5/08

Bull 16134394

Tattoo: 1V

C H Quantum 6247

C H Quantum 3330

C H Blackbird 0136

A A R Windy Ridge 523

Cole Creek Clova Juanada 811

HBR Encore 0544

Shoshone Encore 6310

C A R Miss Forever 546

C H Quantum 6247

Cole Creek Clovada 397

Cole Creek Black Cedar 46P

14496765

Cole Creek Clova Juanada 67

Cole Creek Clovanada 49S

#15123755

Cole Creek Clovanada 709

BEPD	
-0.9	.90
WEPD	
+46	.86
YEPD	
+79	.77
MILK	
+36	.50

★ Cedar Ridge is a product of the nation's premier no nonsense, low input, grass based breeding program at Cole Creek Angus Ranch in Joliet, Montana. Greg Golden, owner of Cole Creek, emphasizes—without compromise—those valuable traits not measured by EPDs, such as, structural soundness, fertility, longevity, and maternal efficiency. Cedar Ridge is an outcross to all popular pedigrees, and he offers calving ease with functional efficiency for low input programs.



V D A R P F Cedar Ridge 8191

Calved 1/8/11

Bull 17041460

Tattoo: 8191

Cole Creek Black Cedar 46P

C H Quantum 6247

Cole Creek Clova Juanada 67

HBR Encore 0544

Cole Creek Clovanada 709

V D A R Really Windy 4097

A A R Really Windy 1205

VDAR Blackbird 2031

VDAR Right Now 2151

V D A R P F Linda 303

Cole Creek Cedar Ridge 1V

16134394

Cole Creek Clovanada 49S

V D A R P F Linda 9744

16434292

V D A R P F Linda 6336

BEPD	
-1.0	.49
WEPD	
+50	.41
YEPD	
+86	.33
MILK	
+28	.18

★ We purchased 8191 from the highly respected Van Dyke Angus Ranch their 2012 bull sale. We selected him for use on virgin heifers after a thorough search for unrelated genetics to our herd. He is a cross of two bulls with increasing popularity in Angus breed for low birth weight genetics-Cole Creek Cedar Ridge 1V and VDAR Really Windy 4097.

Featured Lot


18
 QUARTERS

WRA Cedar Run A7

Calved 1/27/13

Bull +17645832

Tattoo: A7

Cole Creek Black Cedar 46P
Cole Creek Cedar Ridge 1V
 16134394 Cole Creek Clovanada 49S

C H Quantum 6247
 Cole Creek Clova Juanada 67
 HBR Encore 0544
 Cole Creek Clovanada 709

CAR Duke 104
W R A Eileen Bar 115P
 14842003 W R A Eileen Bar 115M

Car Tracker 904
 C A R Miss Raindancer 421
 W R A MOJO K5
 W R A Eileen Bar 114J

BEPD		BW
-0.4	.38	78
WEPD		
+54	.31	690
YEPD		WR
+88	.30	119
		365
MILK		1292
+32	.19	YR
		106

★ Cedar Run could well prove to be the most valuable bull produced by his prolific dam, 115P. This high performance outcross calving ease prospect is blessed with an abundance of the essential traits that made the Angus breed great. He is a moderate framed, long bodied, well balanced, structurally sound prospect with tremendous base width and muscle. Add his quiet disposition, masculinity, and big testicles to the equation, and Cedar Run promises to be one of the most complete bulls to sell this spring. We will be maintaining an interest in A7.

★ Terms and Conditions to be Announced.

19
 QUARTERS

WRA Cedar Ridge A2

Calved 1/24/13

Bull +17645825

Tattoo: A2

Cole Creek Black Cedar 46P
Cole Creek Cedar Ridge 1V
 16134394 Cole Creek Clovanada 49S

C H Quantum 6247
 Cole Creek Clova Juanada 67
 HBR Encore 0544
 Cole Creek Clovanada 709

CAR Duke 104
W R A Eileen Bar 115P
 14842003 W R A Eileen Bar 115M

Car Tracker 904
 C A R Miss Raindancer 421
 W R A MOJO K5
 W R A Eileen Bar 114J

BEPD		BW
-0.5	.05	80
WEPD		
+48	.05	205
YEPD		493
+83	.05	WR
		100
		365
MILK		1144
+32	.05	YR
		100

★ The flush of four bulls by Cedar Ridge out of 115P stacks calving ease outcross genetics with moderate size, muscle, and fleshing ability. Lot 19 fits that description. He should sire low input, fertile daughters and heavy muscled, wide based sons that have rapid early growth.

Elite Calving Ease Genetics


20
 QUARTERS

WRA Cedar Ridge A13

Calved 1/31/13

Bull +17645844

Tattoo: A13

Cole Creek Black Cedar 46P
Cole Creek Cedar Ridge 1V
 16134394 Cole Creek Clovanada 49S

CAR Duke 104
W R A Eileen Bar 115P
 14842003 W R A Eileen Bar 115M

C H Quantum 6247
 Cole Creek Clova Juanada 67
 HBR Encore 0544
 Cole Creek Clovanada 709

Car Tracker 904
 C A R Miss Raindancer 421
 W R A MOJO K5
 W R A Eileen Bar 114J

BEPD	BW
-0.9 .38	72
WEPD	
+49 .31	583
YEPD	WR
+85 .30	101
	365
MILK	1228
+32 .19	YR
	101

★ Lot 20 is a big bodied, visually appealing flush mate to Cedar Run. He is a sound structured, free moving prospect that is moderate in frame size with excellent base width and thickness. The Cole Creek program that produced his sire, Cedar Ridge, and the Connelly program that produced his maternal grandsire, Duke, both value the profit making traits of fertility and longevity. We expect Lot 20 to carry on that tradition.

★ Selling 2/3 Interest and Full Possession.

21
 QUARTERS

WRA Cedar Ridge A3

Calved 1/24/13

Bull+17645826

Tattoo: A3

Cole Creek Black Cedar 46P
Cole Creek Cedar Ridge 1V
 16134394 Cole Creek Clovanada 49S

CAR Duke 104
W R A Eileen Bar 115P
 14842003 W R A Eileen Bar 115M

C H Quantum 6247
 Cole Creek Clova Juanada 67
 HBR Encore 0544
 Cole Creek Clovanada 709

Car Tracker 904
 C A R Miss Raindancer 421
 W R A MOJO K5
 W R A Eileen Bar 114J

BEPD	BW
-0.7 .38	73
WEPD	
+49 .31	571
YEPD	WR
+85 .26	99
	365
MILK	1229
+32 .19	YR
	101

★ Lot 21 looks so much like his flush brother, Lot 19, that it is hard to tell them apart. A3 is especially moderate framed and big nitted, with balance and structural soundness. Like his three flush brothers, we expect Lot 21 to sire calving ease with muscle and early growth coupled with exceptionally functional, low input replacements.

Moderate Birth EPD Sons of 8191

22
QUARTERS

Benfield Ridge A77

Calved 3/7/13

Bull 17669881

Tattoo: A77

Cole Creek Cedar Ridge 1V
V D A R PF Cedar Ridge 8191
17041460 V D A R PF Linda 9744

Cole Creek Black Cedar 46P
Cole Creek Clovanada 49S
V D A R Really Windy 4097
V D A R PF Linda 6336

Benfield Substance 8506
Benfield Rosalie 3811
17065995 Benfield Rosalie 34

H A Image Maker 0415
Benfield Edella 1105
Benfield Kona 34
B F F Rosalie 6505

BEPD	BW
+1.0 .33	80
WEPD	205
+51 .23	694
YEPR	WR
+89 .21	100
MILK	365
+25 .10	1267
	YR
	104

★ A low birth weight bull and low birth EPD bull, A77 performed well on test and has continued to improve. Lot 22 is a son of 8191 and would be a good choice to use on heifers. His dam is a Substance x Kona x Genesis, three herd bulls with a positive impact on the Benfield cow herd.

23
QUARTERS

Benfield Ridge A80

Calved 3/9/13

Bull 17669882

Tattoo: A80

Cole Creek Cedar Ridge 1V
V D A R PF Cedar Ridge 8191
17041460 V D A R PF Linda 9744

Cole Creek Black Cedar 46P
Cole Creek Clovanada 49S
V D A R Really Windy 4097
V D A R PF Linda 6336

CAR Tracker 458
Benfield Edella 9140
16334292 Benfield Edella 1105

Car Tracker 904
CAR Miss Marie 271
Jauer Java 8136
Benfield Edella 7813

BEPD	BW
+1.4 .34	88
WEPD	205
+50 .23	685
YEPR	WR
+88 .22	98
MILK	365
+22 .11	1226
	YR
	100

★ A80 will add muscle, weaning performance, and fleshing ability to his offspring. He is a wide topped, deep bodied and thick made bull of moderate frame. His Tracker 458 dam is a model Angus cow with keeping ability on grass-a superior trait of this cow family.

24
QUARTERS

Benfield Ridge A73

Calved 3/2/13

Bull 17669879

Tattoo: A73

Cole Creek Cedar Ridge 1V
V D A R PF Cedar Ridge 8191
17041460 V D A R PF Linda 9744

Cole Creek Black Cedar 46P
Cole Creek Clovanada 49S
V D A R Really Windy 4097
V D A R PF Linda 6336

S Chisum 6175
Benfield Edella 6111
+17066001 Benfield Edella 1105

S Alliance 3313
S Gloria 464
Jauer Java 8136
Benfield Edella 7813

BEPD	BW
+0.6 .33	75
WEPD	205
+55 .23	700
YEPR	WR
+86 .22	100
MILK	365
+26 .11	1110
	YR
	91

★ If you need to breed a handful of heifers or want to have an extra bull around in case of an injury, take a look. A73 is a calving ease bull with solid EPD's out of a nice two year old. He fell behind his peers with a bout of foot rot, but that does not alter an attractive genetic package.



Sons of 8191

25
 HEAD
 QUARTERS

Benfield Ridge A74

Calved 3/2/13

Bull 17669880

Tattoo: A74

Cole Creek Cedar Ridge 1V
V D A R PF Cedar Ridge 8191
 17041460 V D A R PF Linda 9744

Cole Creek Black Cedar 46P
 Cole Creek Clovanada 49S
 V D A R Really Windy 4097
 V D A R PF Linda 6336

Benfield Substance 8506
Benfield Queen L 3211
 17065990 Benfield Queen L 235

H A Image Maker 0415
 Benfield Edella 1105
 Javier Java 8136
 Benfield Queen L 31

BEPD	BW
+1.2 .32	78
WEPD	205
+50 .22	678
YEPD	WR
+86 .21	97
MILK	365
+27 .10	1216
	YR
	99

★ Lot 25 is a cross of 8191 x Substance x Java and out of one of our best cow families. His two year old dam is a model young Angus female of moderate size with a perfect udder. Born unassisted out of a heifer, A74 is a moderate birth EPD bull who turned in good weaning and yearling performance and is a good choice for heifers or cows. With proven maternal genetics, you can keep his females as replacement as well!

26
 HEAD
 QUARTERS

Benfield Ridge A87

Calved 3/24/13

Bull 17669885

Tattoo: A87

Cole Creek Cedar Ridge 1V
V D A R PF Cedar Ridge 8191
 17041460 V D A R PF Linda 9744

Cole Creek Black Cedar 46P
 Cole Creek Clovanada 49S
 V D A R Really Windy 4097
 V D A R PF Linda 6336

Benfield Substance 8506
Benfield Blackcap 061
 16782385 Benfield Blackcap 393

H A Image Maker 0415
 Benfield Edella 1105
 Benfield Kona 34
 Benfield Blackcap 9961

BEPD	BW
+3.2 .33	95
WEPD	205
+54 .23	698
YEPD	WR
+92 .14	100
MILK	365
+28 .10	1272
	YR
	NA

★ A87 is a larger framed and high performing son of 8191. The more you study this bull you will appreciate his balance, muscle and feet and leg structure. His Substance dam is a powerful cow. His grandam is a pathfinder with a weaning ratio of 104 on 9 calves. Although younger than his contemporaries, A87 was one of top performing bulls on test.

27
 HEAD
 QUARTERS

Benfield Ridge A88

Calved 3/24/13

Bull 17669886

Tattoo: A88

Cole Creek Cedar Ridge 1V
V D A R PF Cedar Ridge 8191
 17041460 V D A R PF Linda 9744

Cole Creek Black Cedar 46P
 Cole Creek Clovanada 49S
 V D A R Really Windy 4097
 V D A R PF Linda 6336

CAR Tracker 458
Benfield Queen L 8911
 17066010 Benfield Queen L 7431

Car Tracker 904
 CAR Miss Marie 271
 H A Image Maker 0415
 Benfield Queen L 9955

BEPD	BW
+1.6 .33	76
WEPD	205
+55 .22	728
YEPD	WR
+95 .14	104
MILK	365
+28 .09	1215
	YR
	NA

★ A88 is a complete and well balanced calving ease bull with muscle and excellent performance. He was the second heaviest bull calf from our two year females and did well on test. We expect more terrific progeny from his beautiful Tracker 458 dam from our prolific Queen L cow family.



Low Birth Weight Sons of 8191



28
QUARTERS

Benfield Ridge A43

Calved 2/18/13

Bull 17669871

Tattoo: A43

Cole Creek Cedar Ridge 1V
V D A R PF Cedar Ridge 8191
17041460 V D A R PF Linda 9744

Cole Creek Black Cedar 46P
Cole Creek Clovanada 49S
V D A R Really Windy 4097
V D A R PF Linda 6336

Benfield Substance 8506
Benfield Zara 4311
17070798 Benfield Elbora 655

H A Image Maker 0415
Benfield Edella 1105
Stevenson Rainmaker L406
Benfield Elbora 230

Tattoo: A43		BW
BEPD		72
+0.3	.33	205
WEPD		705
+52	.22	WR
YEPD		101
+86	.21	365
MILK		1198
+26	.10	98

★ A43 is a balanced genetic package of calving ease, weaning performance, muscle, and maternal value. His attractive and hard-working Substance dam is one of our best young females. We are always impressed when a first calf heifer raises a calf on grass and milk alone with an actual weight of 652 lbs. at 218 days of age while breeding back on time and staying in good condition. If you want to optimize the important economic traits of cattle production, A43 will get the job done.

29
QUARTERS

Benfield Ridge A71

Calved 2/28/13

Bull 17669878

Tattoo: A71

Cole Creek Cedar Ridge 1V
V D A R PF Cedar Ridge 8191
17041460 V D A R PF Linda 9744

Cole Creek Black Cedar 46P
Cole Creek Clovanada 49S
V D A R Really Windy 4097
V D A R PF Linda 6336

KG 5594 Traveler 3020
Benfield Edella 4411
+17065996 Benfield Edella 1105

R R 7012 Traveler 5594
KG Erica 1195
Jauer Java 8136
Benfield Edella 7813

Tattoo: A71		BW
BEPD		66
-1.2	.33	205
WEPD		630
+46	.23	WR
YEPD		90
+87	.22	365
MILK		1184
+25	.10	96

★ Here is another balanced trait calving ease son that is line bred with low birth weight genetics. He would be an excellent choice for heifers. His dam is a clean made female with a perfect udder.

Reference Sire



S A V Final Answer 0035

Calved 2/22/00

Sitz Traveler 8180
#11367940

S A V Emulous 8145
13094078

G D A R Traveler 71
Sitz Everelda Entense 1137
Bon View Bando 598
S A V Sky Emulous 2124

Bull #13592905

Traveler 1148 G D A R
G D A R Miss Blackcap 567
G D A R Rainmaker 340
Sitz Everelda Entense 2335
Tehama Bando 155
Bon View Dora 56
Ellanin Sky Diver
Tail N 0383

Tattoo: 0035

BEPD
-1.0 .98
WEPD
+61 .98
YEPD
+103 .97
MILK
+25 .94

★ Final Answer is popular for his consistent calving ease and risk free choice for heifers. His balanced trait EPD package is proven for growth, milk, moderate mature size and carcass merit.



Benfield Answer A03

Calved 2/13

S A V Final Answer 0035
#13592905

Benfield Blackcap 8811
17070803

Sitz Traveler 8180
S A V Emulous 8145
CAR Tracker 458
Benfield Blackcap 393

Bull 17669854

G D A R Traveler 71
Sitz Everelda Entense 1137
Bon View Bando 598
S A V Sky Emulous 2124
Car Tracker 904
CAR Miss Marie 271
Benfield Kona 34
Benfield Blackcap 9961

Tattoo: A03

BEPD	BW
+1.8 .36	79
WEPD	205
+52 .28	698
YEPD	WR
+94 .28	100
MILK	365
+24 .20	1231
	YR
	101

★ Don't overlook this complete and balanced trait Final Answer son with moderate birth genetics and above average yearling performance. His dam is a Tracker 458 daughter that further traces to Kona, Ringo, Genesis, and Rainmaker 380U, five bulls that we used with great success at Benfield.

Herd Bull by Final Answer



31
HEAD
QUARTERS

Benfield Colt A45

Calved 2/19/13

Bull +17669872

Tattoo: A45

Sitz Traveler 8180
S A V Final Answer 0035
#13592905 S A V Emulous 8145

Jauer Java 8136
Benfield Edella 1105
14177734 Benfield Edella 7813

G D A R Traveler 71
Sitz Everelda Entense 1137
Bon View Bando 598
S A V Sky Emulous 2124
Jauer 7111 Traveler 546 9239
Jauer 6807 Traveler 310 085
Gardens Genesis 3151 S1
B F F Edella 5405

BEPD	BW
-0.6 .05	84
WEPD	205
+55 .05	716
WR	100
YEPD	365
+95 .05	1322
MILK	YR
+20 .05	100

★ Take a look at these three embryo transfer full brothers by Final Answer from Benfield Edella 1105, a proven dam of AI stud bulls. Colt A45 is a true herd bull and multidimensional sire with highly proven genetics on the top and bottom of his pedigree. His dam is the mother of the popular Benfield Substance 8506, a featured sire at Genex, and Benfield Reality 6211, a recent addition to the lineup at Select Sires. 1105 consistently transmits, muscle, volume, performance and keeping ability to her sons while moderating birth weights. Colt is one of the top bulls this year for weaning and yearling weight. He is a super quiet bull with extra volume, capacity and muscle in a negative birth EPD package. A can't miss prospect!

★ Selling 2/3 semen interest and full possession.

Benfield Edella 1105, dam of Benfield Substance 8506, Benfield Reality 6211 and Lots 31, 32, 33, 37 and 38.



ET Brothers by Final Answer x 1105



32
HEAD
QUARTERS

Benfield Answer A62

Calved 2/25/13

Bull +17669876

Tattoo: A62

Sitz Traveler 8180
S A V Final Answer 0035
#13592905 S A V Emulous 8145

G D A R Traveler 71
Sitz Everelda Entense 1137
Bon View Bando 598
S A V Sky Emulous 2124

Jauer Java 8136
Benfield Edella 1105
14177734 Benfield Edella 7813

Jauer 7111 Traveler 546 9239
Jauer 6807 Traveler 310 085
Gardens Genesis 3151 S1
B F F Edella 5405

BEPD	BW
-0.7 .38	71
WEPD	205
+60 .32	730
YEPD	WR
+96 .32	109
MILK	1202
+20 .24	YR
	100

★ A62 exemplifies the type of balanced trait proven genetics we are striving to produce that will add profit to our customers. Everything is right here! This tremendous herd bull prospect is structurally sound and long bodied with bred-in maternal performance, low birth genetics and keeping ability on grass. If you want to reduce the risks of selection in your next herd bull, look no further.

★ Selling 2/3 semen interest and full possession.

33
HEAD
QUARTERS

Benfield Answer A48

Calved 2/9/13

Bull +17669874

Tattoo: A48

Sitz Traveler 8180
S A V Final Answer 0035
#13592905 S A V Emulous 8145

G D A R Traveler 71
Sitz Everelda Entense 1137
Bon View Bando 598
S A V Sky Emulous 2124

Jauer Java 8136
Benfield Edella 1105
14177734 Benfield Edella 7813

Jauer 7111 Traveler 546 9239
Jauer 6807 Traveler 310 085
Gardens Genesis 3151 S1
B F F Edella 5405

BEPD	BW
-0.1 .38	74
WEPD	205
+49 .32	583
YEPD	WR
+90 .32	87
MILK	365
+20 .24	1173
	YR
	100

★ A more moderate framed edition compared to his two full brothers, A48 is an excellent choice to breed heifers while moderating mature cow size. If you want to finish cattle on grass, take a look at A48 as performance, keeping ability and mature size are paramount to success. Raised by a recipient with little milk, Lot 33 weighed less at weaning but has performed in the top third of our bulls for post-weaning gain. There is a lot of genetic merit and potential in this bull!

Calving Ease Sons by Final Answer



34
HEAD
QUARTERS

Benfield Answer A13

Calved 2/8/13

Bull 17669859

Tattoo: A13

Sitz Traveler 8180
S A V Final Answer 0035
#13592905 S A V Emulous 8145

G D A R Traveler 71
Sitz Everelda Entense 1137
Bon View Bando 598
S A V Sky Emulous 2124

KG 5594 Traveler 3020
Benfield Edella 3711
+17065994 Benfield Edella 1105

R R 7012 Traveler 5594
KG Erica 1195
Jauer Java 8136
Benfield Edella 7813

BEPD	BW
-1.4 .37	70
WEPD	205
+60 .29	736
YEPD	WR
+103 .29	106
	365
MILK	1250
+25 .21	YR
	103

★ *Benfield Answer A13 is a clean made, sharp fronted, calving ease bull by Final Answer from a daughter of the "mystery bull" and tracing to 1105. A13 was the heaviest bull calf out of our two year old females. He is a good choice for heifers to add milk, performance and keeping ability. Note his birth to weaning EPD "spread".*

35
HEAD
QUARTERS

Benfield Answer A04

Calved 2/4/13

Bull 17669855

Tattoo: A04

Sitz Traveler 8180
S A V Final Answer 0035
#13592905 S A V Emulous 8145

G D A R Traveler 71
Sitz Everelda Entense 1137
Bon View Bando 598
S A V Sky Emulous 2124

S Chisum 6175
Benfield Edella 6611
+17066003 Benfield Edella 1105

S Alliance 3313
S Gloria 464
Jauer Java 8136
Benfield Edella 7813

BEPD	BW
+0.0 .37	71
WEPD	205
+59 .29	668
YEPD	WR
+107 .29	96
	365
MILK	1305
+23 .21	YR
	107

★ *Benfield Answer A04 excelled on test and keeps getting better. He combines the antagonistic traits of low birth weight and excellent yearling performance. His birth to yearling EPD spread is among the largest of any bulls in this year's sale. He combines two of the most popular bulls at Genex-Final Answer and Chisum. He is sound, long bodied and well balanced.*

Reference Sire



Coleman Regis 904

Calved 1/11/09

Bull 16364794

Tattoo: 904

Sitz Traveler 8180
S A V Final Answer 0035
 #13592905 S A V Emulous 8145
 Connealy Onward
Coleman Donna 714
 +15706882 Coleman Donna 386

G D A R Traveler 71
 Sitz Everelda Entense 1137
 Bon View Bando 598
 S A V Sky Emulous 2124
 Connealy Lead On
 Altune of Conanga 6104
 Basin Rainmaker 654X
 KMK Donna J311

BEPD	
-1.2	.94
WEPD	
+56	.91
YEPD	
+89	.86
MILK	
+33	.31

★ Coleman Regis 904 is a popular young Select Sires bull due to his strong maternal heritage, proven calving ease, and balanced EPD profile. His progeny are moderate in size with an excellent disposition. We have mated Regis to females with extra volume and capacity to moderate birth weight.



Benfield Regis A25

Calved 2/14/13

Bull 17670722

Tattoo: A25

S A V Final Answer 0035
Coleman Regis 904
 16364794 Coleman Donna 714
 Benfield Kona 34
Benfield Elbora 441
 #14845544 B F F Elbora 7750

Sitz Traveler 8180
 S A V Emulous 8145
 Connealy Onward
 Coleman Donna 386
 H A Intrepid 6207
 B F F Queen L 7724
 O C C Backstop 888B
 Benfield Elbora 52B 1D

BEPD		BW	
-0.6	.37	74	205
WEPD		WR	
+49	.29	686	98
YEPD		365	
+75	.28	1102	90
MILK		YR	
+29	.15		

★ Benfield Regis A25 is a larger framed bull by Regis with bred in maternal value and weaning performance in a moderate birth weight EPD package. His pathfinder Kona dam has raised 8 calves for a 111 weaning ratio. Don't overlook this balanced trait herd bull from one of our top cows. A maternal brother by Elliott sold for \$6250 in last year's sale.

ET Brothers by Regis x 1105



37
BMS A 49
QUARTERS

Benfield Regis A54

Calved 2/22/13

Bull 17670724

Tattoo: A54

Coleman Regis 904

16364794

S A V Final Answer 0035

Coleman Donna 714

Jauer Java 8136

Benfield Edella 1105

14177734

Benfield Edella 7813

Sitz Traveler 8180

S A V Emulous 8145

Connealy Onward

Coleman Donna 386

Jauer 7111 Traveler 546 9239

Jauer 6807 Traveler 310 085

Gardens Genesis 3151 S1

B F F Edella 5405

BEPD		BW	
-0.7	.38	74	205
WEPD		WR	
+53	.31	688	103
YEPD		YR	
+87	.31	365	1210
MILK		YR	
+23	.17	102	

★ Benfield Edella 1105 has produced outstanding sons from Image Maker, Game Day, Chisum and Final Answer. After raising this embryo transfer calf, I would add Regis to that distinguished list as well. Benfield Regis A54 is true herd bull of proven genetics on both sides of his pedigree you can mate with heifers or cows. We like his clean bone and set to his leg and foot. He is an easy going, deep bodied and big volume bull in the tradition of his dam.

★ Selling 2/3 semen interest and full possession.

38
BMS A 49
QUARTERS

Benfield Regis A49

Calved 2/20/13

Bull 17670723

Tattoo: A49

Coleman Regis 904

16364794

S A V Final Answer 0035

Coleman Donna 714

Jauer Java 8136

Benfield Edella 1105

14177734

Benfield Edella 7813

Sitz Traveler 8180

S A V Emulous 8145

Connealy Onward

Coleman Donna 386

Jauer 7111 Traveler 546 9239

Jauer 6807 Traveler 310 085

Gardens Genesis 3151 S1

B F F Edella 5405

BEPD		BW	
-1.1	.38	69	205
WEPD		WR	
+52	.31	670	100
YEPD		YR	
+86	.28	365	1172
MILK		YR	
+23	.17	98	

★ An embryo transfer calf by Regis x 1105, A49 is a full brother to Lot 37 and maternal brother to Substance, Reality, Full Day and Lots 31-33. As expected, this mating has produced calving ease with extra volume, capacity and fleshing ability without sacrificing performance. A49 is a heifer bull with the stacked genetic package to produce progeny that will perform on grass in a low input environment as calves and as females if retained for the herd.

Herd Bull by Regis



39
HEAD
QUARTERS

Benfield Regis A11

Calved 2/7/13

S A V Final Answer 0035

Coleman Regis 904

16364794

Coleman Donna 714

GDAR Game Day 449

Benfield Zara 5111

17065998

Benfield Elbora 9176

Bull 17670692

Sitz Traveler 8180

S A V Emulous 8145

Connealy Onward

Coleman Donna 386

Boyd New Day 8005

G D A R Miss Wix 474

Benfield Romeo 628

Benfield Elbora 7406

Tattoo: A11

BEPD	BW
-0.4 .36	70
WEPD	205
+54 .28	692
YEPD	WR
+95 .28	99
MILK	365
+30 .13	1254
	YR
	102

★ Benfield Regis A11 is a terrific outcross calving ease prospect for our repeat customers. He puts together an attractive phenotype with a low birth weight, above average test gain and yearling performance and extra muscling. Out of a hard working two year old, his grandam and great,great, grandam remain in our herd with positive weaning records. A11 is a great two way balanced trait bull you can use on heifers or cows.



Reference Sire



WRA Mirror Image T10

Calved 2/8/07

Bull 15861097

Tattoo: T10

Hero 6267 of RR 2418
HA Image Maker 0415 [AMF-NHF]
 #+13739532 HA Rito Blackcap 9038

CAR Duke 104
WRA Eileen Bar 115P
 14842003 WRA Eileen Bar 115M

RR Hero 6267
 RR Everelda Entense 0413
 H 96 Rito 2100 7371
 H 96 Blackcap 3835

Car Tracker 904
 CAR Miss Raindancer 421
 WRA MOJO K5
 WRA Eileen Bar 114J

BEPD	
-.5	.78
WEPD	
+54	.68
YEPD	
+90	.64
MILK	
+42	.43

★ *WRA Mirror Image T10 topped our 2008 sale when ½ interest and fall possession sold to Eddie Shelton's Diamond S Farms of Union Hall, Virginia. The more time goes by, the more we appreciate Mirror Image because he does so many things well. Mirror Image is a low birthweight bull that sires excellent performance in progeny that are structurally correct with volume, base width, and muscle. But most importantly, his daughters are outstanding. They are functional, fault free, easy fleshing females with beautiful udders. They defy conventional wisdom which states that low input cattle lack performance because their disciplined mature size allows them to have early growth—when growth is important. Eddie Shelton put it best when he said “Mirror Image improves everything you breed him to”.*



WRA Mirror Image A16

Calved 2/7/13

Bull 17645801

Tattoo: A16

H A Image Maker 0415
W R A Mirror Image T10
 15861097 W R A Eileen Bar 115P

Ginger Hill 6807 Traveler 23
Glenara Lucy 29
 15263352 Ginger Hill Lucy 9502

Hero 6267 of R R 2418
 H A Rito Blackcap 9038
 CAR Duke 104
 W R A Eileen Bar 115M
 D H D Traveler 6807
 Ginger Hill Helen 45
 W R A Treasure D1
 V D A R Lucy 917

BEPD		BW	
+9	.35	80	
WEPD		205	
+42	.26	533	
YEPD		WR	
87			
+78	.25	365	
MILK		1091	
+32	.17	YR	
		93	

★ *Prior to weaning, Lot 40 was at a disadvantage to his contemporaries because his 11 year old dam developed mastitis and we failed to realize it, resulting in his low weaning ratio. He has improved greatly since weaning, developing into a moderate framed, stout made, wide based, big bodied herd bull prospect. His full sister is one of our favorite 2 year olds.*

Balanced Trait T10 Sons


41
HEAD
QUARTERS

WRA Mirror Image A20

Calved 2/15/13

Bull 17645866

Tattoo: A20

H A Image Maker 0415
W R A Mirror Image T10
 15861097 W R A Eileen Bar 115P

KG 5594 Traveler 3020
W R A Sarah 438W
 16467108 W R A Sarah 38T

Hero 6267 of R R 2418
 H A Rito Blackcap 9038
 CAR Duke 104
 W R A Eileen Bar 115M

R R 7012 Traveler 5594
 KG Erica 1195
 H A Image Maker 0415
 W R A Sarah 38R

BEPD		BW
-2.3	.35	72
WEPD		205
+57	.26	640
YEPD		WR
+97	.26	104
MILK		365
+37	.16	1179
		YR
		101

★ The list of bulls that are -2.0 for BW EPD and +95 for YW EPD is a short one. A20 is on that list. He is a maternal brother to an excellent Topper son that sold in 2013 to Bryan Imes from Port Royal, Pennsylvania. This eye appealing, moderate framed herd sire prospect has the muscle, performance, and stoutness rarely seen in calving ease bulls.

★ Selling 2/3 Interest and Full Possession.

42
HEAD
QUARTERS

WRA Mirror Image A21

Calved 2/16/13

Bull 17645881

Tattoo: A21

H A Image Maker 0415
W R A Mirror Image T10
 15861097 W R A Eileen Bar 115P

W R A Aristocrat R4
W R A Sarah 837T
 15861120 W R A Sarah 837K

Hero 6267 of R R 2418
 H A Rito Blackcap 9038
 CAR Duke 104
 W R A Eileen Bar 115M

W R A Aristocrat M1
 W R A Royal Lady 392J
 H A Intrepid 6207
 W R A Sarah 837G

BEPD		BW
+1.8	.36	87
WEPD		205
+52	.26	644
YEPD		WR
+76	.25	105
MILK		365
+35	.16	1017
		YR
		87

★ It is rare that we have a bull get sick after weaning, but Lot 42 sure did. He is fine now, but was substantially set back after being one of our better performing calves at weaning. We have three full sisters to A21, and they are among our best T10 daughters.

Herdsire Prospect



43
HEAD
QUARTERS

WRA Mirror Image A22

Calved 2/17/13

Bull 17645865

Tattoo: A22

H A Image Maker 0415
W R A Mirror Image T10
15861097 W R A Eileen Bar 115P

Hero 6267 of R R 2418
H A Rito Blackcap 9038
CAR Duke 104
W R A Eileen Bar 115M

CAR Tracker 461
W R A Royal Lady 392S
15507672 W R A Royal Lady 392J

Car Tracker 904
C A R Miss Hostage 680
Ginger Hill Rainmaker 661
W R A Royal Lady 392G

BEPD	BW
+2.0 .36	88
WEPD	205
+52 .26	622
YEPD	WR
+94 .25	101
+37 .16	365
MILK	1254
	YR
	107

★ The full brother to A22, WRA Mirror Image Z11, was a feature of our 2013 sale, selling to JSK Livestock of Millbrook, New York. A22 is just as good. He is a wide based, big volume, stout made prospect that is moderate in frame size with balance and style. His dam records 5 @ 106 WWR. A22 is a herd bull.

★ Selling 2/3 Interest and Full Possession.

44
HEAD
QUARTERS

WRA Mirror Image A26

Calved 2/21/13

Bull 17645869

Tattoo: A26

H A Image Maker 0415
W R A Mirror Image T10
15861097 W R A Eileen Bar 115P

Hero 6267 of R R 2418
H A Rito Blackcap 9038
CAR Duke 104
W R A Eileen Bar 115M

W R A Treasure L1
W R A Helen 743P
14841998 E F Thelma

Ginger Hill Treasure 8018
Ginger Hill Dawn 165
W R A Treasure D1
Dakota Helen 43

BEPD	BW
+2.4 .36	90
WEPD	205
+47 .26	610
YEPD	WR
+77 .26	99
+34 .17	365
MILK	1162
	YR
	99

★ The productive dam of Lot 44 records 8 calves @ 100 WWR with a 362 day calving interval, and she had her ninth calf early this calving season. She is 10 years old this spring, and looks like a cow half her age. Expect Lot 44 to sire productive, long lived daughters.

Fault Free T10 Sons


45
HEAD
QUARTERS

WRA Mirror Image A18

Calved 2/9/13

Bull 17645818

Tattoo: A18

H A Image Maker 0415
W R A Mirror Image T10
 15861097 W R A Eileen Bar 115P

W R A Intrepid J24
W R A Sarah 38M
 14228961 W R A Sarah 38G

Hero 6267 of R R 2418
 H A Rito Blackcap 9038
 CAR Duke 104
 W R A Eileen Bar 115M

H A Intrepid 6207
 W R A Sarah 37B
 O C C Backstop 888B
 W R A Sarah 38Z

BEPD	BW
+2.5 .36	84
WEPD	205
+49 .26	618
YEPD	WR
+82 .20	101
	365
MILK	1170
+33 .17	YR
	100

★ Lot 45 is a fault free, well balanced, heavy muscled son of our great T10 herd bull. His 12 year old dam records 10 @ 101 WWR with a 362 day calving interval. A maternal brother to Lot 45 serves in the purebred herd owned by Andy Hagen of Sheridan, Montana. Expect Lot 45 to sire beautifully patterned progeny that are the low input, problem free kind.

46
HEAD
QUARTERS

WRA Mirror Image A35

Calved 3/24/13

Bull 17645818

Tattoo: A35

H A Image Maker 0415
W R A Mirror Image T10
 15861097 W R A Eileen Bar 115P

Ginger Hill 23 Traveler 306
W R A Eileen Bar 115T
 15861094 W R A Eileen Bar 115M

Hero 6267 of R R 2418
 H A Rito Blackcap 9038
 CAR Duke 104
 W R A Eileen Bar 115M

Ginger Hill 6807 Traveler 23
 Ginger Hill Blackcap 8539
 W R A MOJO K5
 W R A Eileen Bar 114J

BEPD	BW
+3 .36	85
WEPD	205
+43 .26	578
YEPD	WR
+74 .20	94
	365
MILK	NA
+32 .16	YR
	NA

★ Our youngest calf, Lot 46 is very tightly bred, sired by T10 and out of a maternal sister to T10's dam. Like all T10 progeny, Lot 46 is a structurally sound, free moving prospect with a balance of length, muscle, and volume.



WRA Mirror Image A32

Calved 3/20/13

Bull 17645812

Tattoo: A32

H A Image Maker 0415
W R A Mirror Image T10
 15861097 W R A Eileen Bar 115P

Hero 6267 of R R 2418
 H A Rito Blackcap 9038
 CAR Duke 104
 W R A Eileen Bar 115M

W R A Aristocrat R4
W R A Sarah 35T
 15861067 W R A Sarah 35H

W R A Aristocrat M1
 W R A Royal Lady 392J
 H A Intrepid 6207
 W R A Sarah 37F

BEPD		BW
+1.6	.36	86
WEPD		205
+51	.26	622
YEPD		WR
+82	.25	101
MILK		365
+33	.16	1094
		YR
		93

★ Lot 47 is a young T10 son out of an outstanding Aristocrat R4 daughter, 35T. His full sister is one of our most impressive T10 daughters. The T10 X R4 cross has consistently produced functional, low input cattle, and A32 is so exception.

Reference Sire



WRA Topper U13

Calved 2/16/08

Bull 16179645

Tattoo: U13

H A Traveler 2041
H A Topper 701S
 +12956666 H A Rito Blackcap 9038

Q A S Traveler 23-4
 H 96 Eiserica 1426
 H 96 Rito 2100 7371
 H 96 Blackcap 3835

CAR Duke 104
W R A Sarah 139P
 #14842008 W R A Sarah 139M

Car Tracker 904
 C A R Miss Raindancer 421
 O C C Aristocrat 797A
 W R A Sarah 137J

BEPD	
+1.8	.65
WEPD	
+56	.52
YEPD	
+88	.48
MILK	
+14	.27

★ The sire of WRA Topper U13, HA Topper 701S, was produced in the highly regarded program of Dave Hinman from Malta, Montana. The 701S bull has a rock solid, old line pedigree and he is out of the same cow that produced the popular HA Image Maker bull at ABS. The combination of 701S with our Pathfinder Duke daughter, 139P, produced our WRA Topper U13 herd bull. U13 is a moderate framed, structurally sound, eye appealing herd sire that is packed with about as much muscle as you can practically put in an Angus bull. Topper U13 is one of the rare bulls that can consistently add muscle while siring absolutely functional cattle.

Herdsire Prospect


48
HEAD
QUARTERS

WRA Topper A24

Calved 2/18/13

Bull 17645883

Tattoo: A24

H A Topper 7015
W R A Topper U13
 16179645 W R A Sarah 139P

W R A Mirror Image T10
W R A Sarah 837X
 16767429 W R A Sarah 837T

H A Traveler 2041
 H A Rito Blackcap 9038
 CAR Duke 104
 W R A Sarah 139M

H A Image Maker 0415
 W R A Eileen Bar 115P
 W R A Aristocrat R4
 W R A Sarah 837K

BEPD	BW
+3 .34	75
WEPD	205
+55 .23	651
YEPD	WR
+89 .23	106
MILK	365
+25 .12	1216
	YR
	104

★ *This outstanding Topper son is a full brother in blood to WRA Whitley, now a herd sire at Benfield Angus. Like Whitley, A24 is a complete, fault free, high performance prospect with length, balance, base width, and muscle. His moderate framed, beautifully patterned dam records 2 @ 105 WWR and she only adds to his value.*

★ *Selling 2/3 Interest and Full Possession.*

WRA Whitley Z10


49
HEAD
QUARTERS

WRA Topper A29

Calved 2/22/13

Bull 17645815

Tattoo: A29

H A Topper 7015
W R A Topper U13
 16179645 W R A Sarah 139P

W R A Mirror Image T10
W R A Sarah 35W
 16465325 W R A Sarah 35T

H A Traveler 2041
 H A Rito Blackcap 9038
 CAR Duke 104
 W R A Sarah 139M

H A Image Maker 0415
 W R A Eileen Bar 115P
 W R A Aristocrat R4
 W R A Sarah 35H

BEPD	BW
+1.4 .05	55
WEPD	205
+55 .05	527
YEPD	WR
+88 .05	100
MILK	365
+25 .05	1109
	YR
	100

★ *While we consider the dam of A29, 35W, to be our most impressive T10 daughter we were upset with her last year after she had twins and abandoned A29. We raised him on a bottle for a couple of months before turning him with the cowherd, where he soon learned to survive by stealing milk. Management did not give him a chance to express his potential, but genetically he could be one of the better bulls in the sale.*

High Growth, Heavy Muscled Topper Sons



50
QUARTERS

WRA Topper A31

Calved 2/28/13

Bull 17645852

Tattoo: A31

W R A Topper U13

16179645

H A Topper 7015

W R A Sarah 139P

W R A Mirror Image T10

W R A Eileen Bar 115X

16767409

W R A Eileen Bar 115T

H A Traveler 2041

H A Rito Blackcap 9038

CAR Duke 104

W R A Sarah 139M

H A Image Maker 0415

W R A Eileen Bar 115P

Ginger Hill 23 Traveler 306

W R A Eileen Bar 115M

BEPD	BW
+8 .34	82
WEPD	205
+56 .23	675
YEPD	WR
+92 .23	110
MILK	365
+24 .12	1289
	YR
	110

★ This high performance (110 WWR, 110 YWR) Topper son is a $\frac{3}{4}$ brother to the Benfield sire, Whitley, and he is out of one of our most productive T10 daughters that records 2 @ 109 WWR. Lot 50 is a stout, wide based, long bodied, heavy muscled herd sire prospect. Keeping his performance in a moderate framed package should allow A31 to sire easy keeping, functional, fault free daughters.

★ Selling 2/3 Interest and Full Possession.

51
QUARTERS

WRA Topper A33

Calved 3/20/13

Bull 17645873

Tattoo: A33

W R A Topper U13

16179645

H A Topper 7015

W R A Sarah 139P

W R A Mirror Image T10

W R A Helen 743X

16767425

W R A Helen 743S

H A Traveler 2041

H A Rito Blackcap 9038

CAR Duke 104

W R A Sarah 139M

H A Image Maker 0415

W R A Eileen Bar 115P

Ginger Hill 23 Traveler 306

W R A Helen 743P

BEPD	BW
+6 .34	78
WEPD	205
+54 .23	643
YEPD	WR
+89 .23	105
MILK	365
+24 .12	1245
	YR
	107

★ The mating of Topper to T10 daughters consistently produces moderate framed, heavy muscled, functional progeny. Lot 51 is no exception. He is stout, wide based, and heavy muscled. A33 proves that performance can come in a moderate package, with his 105 WWR and 107 YWR. His beautifully balanced dam may be our easiest fleshing T10 daughter.

Low Birth Weight Topper Sons



52
HEAD
QUARTERS

WRA Topper A17

Calved 2/9/13

Bull 17645824

Tattoo: A17

H A Topper 7015
W R A Topper U13
16179645 W R A Sarah 139P

W R A MOJO K5
W R A Eileen Bar 115M
14228975 W R A Eileen Bar 114J

H A Traveler 2041
H A Rito Blackcap 9038
CAR Duke 104
W R A Sarah 139M

Wra Mojo E7
W R A Ann 27C
H A Intrepid 6207
W R A Eileen Bar 114C

BEPD	BW
-.9 .35	72
WEPD	205
+44 .25	576
YEPD	WR
+72 .24	94
MILK	365
+17 .14	1115
	YR
	95

★ *This attractive Topper son is out of 115M, our 12 year old maternal grandam of Mirror Image T10, Vindicator, Walker, and Cedar Run. Lot 52 is a well balanced, low birthweight prospect that is sound structured, thick made, and built for longevity. Plan on keeping his daughters.*

53
HEAD
QUARTERS

WRA Topper A27

Calved 2/21/13

Bull 17645820

Tattoo: A27

H A Topper 7015
W R A Topper U13
16179645 W R A Sarah 139P

H A Image Maker 0415
W R A Sarah 38T
15861083 W R A Sarah 38R

H A Traveler 2041
H A Rito Blackcap 9038
CAR Duke 104
W R A Sarah 139M

Hero 6267 of R R 2418
H A Rito Blackcap 9038
CAR Duke 104
W R A Sarah 38G

BEPD	BW
+.9 .35	82
WEPD	205
+57 .25	605
YEPD	WR
+95 .24	99
MILK	365
+21 .14	1200
	YR
	103

★ *Lot 53 represents the results obtained by stacking generations of sound structured, fault free, real world cattle. He is well balanced, moderate framed, and wide based, with excellent thickness and big testicles. His productive dam has a picture perfect udder with small teats.*

Reference Sire



Benfield Substance 8506

Calved 2/6/08

Bull 16207085

Tattoo: 8506

Hero 6267 of R R 2418
H A Image Maker 0415
 #13739532 H A Rito Blackcap 9038

R R Hero 6267
 R R Everelda Entense 0413
 H 96 Rito 2100 7371
 H 96 Blackcap 3835

Jauer Java 8136
Benfield Edella 1105
 14177734 Benfield Edella 7813

Jauer 7111 Traveler 546 9239
 Jauer 6807 Traveler 310 085
 Gardens Genesis 3151 S1
 B F F Edella 5405

BEPD	
+1.7	.91
WEPD	
+63	.87
YEPD	
+103	.82
MILK	
+31	.50

★ Substance is eight generations of Benfield breeding and the product of an extended line of easy keeping, fertile, and high performing cows with longevity. He is a dominant sire and a major part of our breeding program. In addition, he is being used in other leading Angus herds across the country. The Substance daughters are impressive. They are fertile, capacious, big volume and easy keeping females with perfect udders and plenty of milk. They are short hair cattle that shed quickly. Substance was bred for all the "convenience traits" that let the cattle work for you. He represents our balanced trait approach to producing profitable Angus genetics for our commercial customers. Owned with Lindskov-Thiel, T & J Cattle, Ellingson Angus and Genex Cooperative. Semen available from Genex.



Benfield Edella 1105, dam of Benfield Substance 8506, Benfield Reality 6211, and Lots 31, 32, 33, 37 and 38.

Sons of Substance


54
HEAD
QUARTERS

Benfield Substance A06

Calved 2/6/13

Bull 17669857

Tattoo: A06

H A Image Maker 0415
Benfield Substance 8506
 16207085 Benfield Edella 1105

Hero 6267 of R R 2418
 H A Rito Blackcap 9038
 Javier Java 8136
 Benfield Edella 7813

BEPD	BW
+3.6 .36	85
WEPD	205
+56 .28	719
YEPD	WR
+100 .27	103
MILK	365
+28 .17	1263
	YR
	103

CAR Tracker 458
Benfield Queen L 097
 16759674 Benfield Queen L 7431

Car Tracker 904
 CAR Miss Marie 271
 H A Image Maker 0415
 Benfield Queen L 9955

★ A06 is a cross of Substance x Tracker 458 which has worked extremely well at Benfield. He combines two bulls with extra power, width, muscle and keeping ability. The ¾ sisters to this mating are model Angus cows. Lot 54 is a deep and long bodied son with a weaning and yearling ratio of 103 from an impressive three year old dam of our Queen L cow family.

55
HEAD
QUARTERS

Benfield Substance A15

Calved 2/9/13

Bull 17669860

Tattoo: A15

H A Image Maker 0415
Benfield Substance 8506
 16207085 Benfield Edella 1105

Hero 6267 of R R 2418
 H A Rito Blackcap 9038
 Javier Java 8136
 Benfield Edella 7813

BEPD	BW
+1.7 .05	85
WEPD	205
+57 .05	535
YEPD	WR
+93 .05	100
MILK	365
+28 .05	1105
	YR
	100

Nichols Extra K205
Benfield Edella 075
 16761920 Benfield Edella 561

Nichols Extra H6
 Nichols Black Heiress F346
 Stevenson Rainmaker L406
 Benfield Edella 8902

★ Unfortunately we lost the dam of Benfield Substance A15, a Nichols Extra daughter that we considered one of the top young cows in the herd. We retained an interest in her Marshall son who sold to Cleremont last year and we regret not turning him out to breed our heifers. Kendall bottle raised A15 and named him "George". He has continued to catch up to his peers post weaning. Despite his disadvantaged beginning, George represents a proven genetic heritage that he will transmit to his progeny.

Sons of Substance



56
HEAD
QUARTERS

Benfield Substance A22

Calved 2/11/13

Bull 17669864

Tattoo: A22

H A Image Maker 0415
Benfield Substance 8506
16207085 Benfield Edella 1105

Hero 6267 of R R 2418
H A Rito Blackcap 9038
Javer Java 8136
Benfield Edella 7813

Benfield Mosby 7401
Benfield Blackcap 095
16759673 Benfield Blackcap 458

H A Image Maker 0415
Benfield Crowley 113
Benfield Kona 34
Benfield Blackcap 108

BEPD	BW
-0.3 .36	72
WEPD	205
+54 .27	674
YEPD	WR
+83 .27	97
MILK	365
+25 .16	1148
	YR
	94

★ *Benfield Substance A22 is another solid calving ease prospect who is sound, free moving and long sided. His dam stems from a line of low birth weight cows with longevity. This bull continues to improve as he get older and will make a nice herd bull for use on heifers or cows.*

57
HEAD
QUARTERS

Benfield Substance A21

Calved 2/10/12

Bull 17379871

Tattoo: A21

H A Image Maker 0415
Benfield Substance 8506
16207085 Benfield Edella 1105

Hero 6267 of R R 2418
H A Rito Blackcap 9038
Javer Java 8136
Benfield Edella 7813

Benfield Mosby 7401
Benfield Blackcap 095
16759673 Benfield Blackcap 458

H A Image Maker 0415
Benfield Crowley 113
Benfield Kona 34
Benfield Blackcap 108

BEPD	BW
+3.9 .37	90
WEPD	205
+62 .28	766
YEPD	WR
+104 .28	110
MILK	365
+28 .18	1296
	YR
	106

★ *A21 is a Substance son that should sire extra pounds given his genetic package and outstanding individual performance. A few more pounds can add up the dollars quickly at today's prices. This larger framed and longer sided bull will work on a variety of cows to improve profits. Note his weaning EPD.*

Reference Sire



Benfield Elliott 029

Calved 3/2/10

Bull +16761931

Tattoo: 029

Hero 6267 of R R 2418
H A Image Maker 0415
#+13739532 H A Rito Blackcap 9038

R R Hero 6267
R R Everelda Entense 0413
H 96 Rito 2100 7371
H 96 Blackcap 3835

Jauer Java 8136
Benfield Edella 1105
14177734 Benfield Edella 7813

Jauer 7111 Traveler 546 9239
Jauer 6807 Traveler 310 085
Gardens Genesis 3151 S1
B F F Edella 5405

BEPD	
-.8	.53
WEPD	
+.65	.42
YEPD	
+.100	.33
MILK	
+.26	.24

★ A full brother to Benfield Substance 8506, Benfield Elliott 029 is a moderate framed bull with plenty of muscle, depth, volume and capacity. Elliott is siring moderate birth weight progeny with above average growth and muscle. His daughters should be fabulous females with added keeping ability, plenty of milk and great udders.

*Benfield Substance 8506,
full brother to Elliott.*



Sons of Elliott

58
QUARTERS

Benfield Elliott A90

Calved 4/2/12

Bull 17669887

Tattoo: A90

H A Image Maker 0415
Benfield Elliott 029
+16761931 Benfield Edella 1105

Hero 6267 of R R 2418
H A Rito Blackcap 9038
Jauer Java 8136
Benfield Edella 7813

Basin Rainmaker D S 380U
Benfield Cassander 1103
+14176917 Benfield Cassander 7818

G D A R Rainmaker 340
Shady Lady Rachel 3233
V D A R Bando 701
Benfield Miss 131D

BEPD	BW
-0.4 .34	79
WEPD	205
+52 .23	725
YEPD	WR
+82 .15	104
MILK	365
+26 .14	1157
	YR
	NA

★ One of the top performing calves for weaning growth, A90 is a good balanced trait son of Elliott that will add performance and produce good females as well. Given the value of heifer calves and the cost to put them in production, longevity is an important economic trait. His Rainmaker 380U dam is an impressive 13 year old female with a weaning production record of 105. We have sold 5 of her sons through previous sales.

59
QUARTERS

Benfield Elliott A84

Calved 3/17/13

Bull 17669884

Tattoo: A84

H A Image Maker 0415
Benfield Elliott 029
+16761931 Benfield Edella 1105

Hero 6267 of R R 2418
H A Rito Blackcap 9038
Jauer Java 8136
Benfield Edella 7813

Stevenson Rainmaker L406
Benfield Blackcap 645
15555955 Benfield Blackcap 218

Basin Rainmaker D S 380U
JRS Enchantress 16A
Sitz Value 7097
B F F Blackcap 6516

BEPD	BW
+1.3 .34	85
WEPD	205
+49 .23	639
YEPD	WR
+79 .21	92
MILK	365
+22 .13	1132
	YR
	93

★ Here is a nice Elliott son with growth and muscle from a productive cow family with longevity. The 8 year old dam and 12 year old grandam remain in our herd and the great grandam raised 12 consecutive calves!

60
QUARTERS

Benfield Elliott A41

Calved 2/16/13

Bull 17669869

Tattoo: A41

H A Image Maker 0415
Benfield Elliott 029
+16761931 Benfield Edella 1105

Hero 6267 of R R 2418
H A Rito Blackcap 9038
Jauer Java 8136
Benfield Edella 7813

Benfield Kona 34
Benfield Zara 411
14845520 Benfield Zara 8844

H A Intrepid 6207
B F F Queen L 7724
W R A Yogi F3
Benfield Zara 61C

BEPD	BW
+1.5 .05	72
WEPD	205
+50 .05	648
YEPD	WR
+79 .05	93
MILK	365
+21 .05	1227
	YR
	100

★ Out of a 10 year old Kona daughter, Benfield Elliott A41 performed in the top 1/3 on postweaning test and made up ground compared to his peers. He is a moderate birth EPD bull that will produce marketable calves and herd replacements. A maternal sister by Substance is one of our top cows and the dam of Lot 8.



Reference Sire



WRA Walker X3

Calved 2/9/10

Bull 16767407

Tattoo: X3

R R 7012 Traveler 5594
KG 5594 Traveler 3020
 14518270 KG Erica 1195

CAR Duke 104
W R A Eileen Bar 115P
 14842003 W R A Eileen Bar 115M

Sitz Traveler 7012
 Rollin Rock Blackbird 2443
 Vermilion Yellowstone
 H A Erica 2201

Car Tracker 904
 C A R Miss Raindancer 421
 W R A MOJO K5
 W R A Eileen Bar 114J

BEPD	
-2	.70
WEPD	
+72	.59
YEPD	
+128	.43
MILK	
+31	.23

★ Walker topped our 2011 sale when 2/3 interest and possession sold for \$15,000 to Genex, Trowbridge Angus, and Whitestone. He is proving to be an outcross calving ease bull with tremendous yearling growth. His first daughters are impressive. We believe Walker's popularity will grow as his daughters come into production. Walker is a full brother to Vindicator, the outcross calving ease bull at Select Sires.



WRA Walker A8

Calved 1/29/13

Bull 17645802

Tattoo: A8

KG 5594 Traveler 3020
W R A Walker X3
 16767407 W R A Eileen Bar 115P

W R A Topper U13
W R A Blacklass 17Y
 17056582 W R A Blacklass 17T

R R 7012 Traveler 5594
 KG Erica 1195
 CAR Duke 104
 W R A Eileen Bar 115M

H A Topper 7015
 W R A Sarah 139P
 H A Image Maker 0415
 W R A Blacklass 17R

BEPD	BW
+1.9	.35
83	205
WEPD	587
+60	.25
YEPD	96
+103	.16
365	1152
MILK	YR
+25	.10
99	

★ There are lots of outstanding real world performance genetics stacked in the pedigree of Lot 61—Walker X Topper X Image Maker X Duke. His mother comes from a solid cow family.

High Performance Walker Son



62
HEAD
QUARTERS

WRA Walker A12

Calved 1/30/13

Bull 17645804

Tattoo: A12

W R A Walker X3
16767407

KG 5594 Traveler 3020
W R A Eileen Bar 115P

R R 7012 Traveler 5594
KG Erica 1195
CAR Duke 104
W R A Eileen Bar 115M

W R A Ann 27R
#15164661

W R A Aristocrat M1
W R A Ann 27H

O C C Aristocrat 797A
W R A Sarah 737J
H A Intrepid 6207
Wra Ann 27E

Tattoo: A12	
BEPD	BW
+3.8 .36	95
WEPD	205
+62 .26	622
YEPD	WR
+112 .24	101
MILK	365
+26 .13	1204
	YR
	103

★ This high performance Walker son is out of our outstanding 27R Pathfinder cow, who records 7 @106 WWR with a 364 day calving interval. His outstanding full brother sold last year to Jim Massie from Amissville, Virginia. A12 represents a tremendous combination of performance and high production maternal genetics.

Reference Sire

K
HEAD
QUARTERS

VDAR Really Windy 8491

Calved 1/19/11

Bull 17037339

Tattoo: 8491

VDAR Really Windy 4097
15776681

A A R Really Windy 1205
VDAR Blackbird 2031

A A R Windy Ridge 362
A A R Lady Kelton 2170
VDAR Enterprise 2059
VDAR Envious Blackbird 6060

VDAR Lass 5700
15022165

VDAR Legend 1281
VDAR Lass 0234

Vermilion Dateline 7078
V D A R Polly 6025
Gardens Prime Time
VDAR Lass 8516

Tattoo: 8491	
BEPD	
-1.7 .44	
WEPD	
+55 .38	
YEPD	
+98 .33	
MILK	
+21 .21	

★ We have great respect for the Van Dyke herd from Manhattan, Montana, in part because they put as much selection pressure on fertility as any herd in the country. The sire of 8491, VDAR Really Windy 4097, has gained popularity throughout the country as a low birthweight, outcross calving ease bull that sires excellent performance. We purchased the 8491 bull with our friends at Ginger Hill Angus in Washington, Virginia to provide real world calving ease genetics.



VDAR Really Windy 4097, sire of 8491

Calving Ease Sons of 8491

63
HEAD
QUARTERS

WRA Really Windy A23

Calved 2/18/13

Bull 17645860

Tattoo: A23

V D A R Really Windy 4097
V D A R Really Windy 8491
 17037339 V D A R Lass 5700

GDAR Game Day 449
W R A Sarah 139Y
 17056610 W R A Sarah 139P

A A R Really Windy 1205
 VDAR Blackbird 2031
 VDAR Legend 1281
 VDAR Lass 0234

Boyd New Day 8005
 G D A R Miss Wix 474
 CAR Duke 104
 W R A Sarah 139M

BEPD	BW
-1.0 .33	72
WEPD	205
+47 .22	551
YEPD	WR
+86 .22	90
MILK	365
+22 .11	1109
	YR
	95

★ Lot 63 is a well balanced, attractive, structurally correct and clean patterned prospect that stacks generations of low birthweight outcross genetics—Really Windy 8491 X Game Day X Duke. From a top cow family, expect Lot 63 to sire calving ease with breed leading style in a functional package.

64
HEAD
QUARTERS

WRA Really Windy A25

Calved 2/20/13

Bull 17645807

Tattoo: A25

V D A R Really Windy 4097
V D A R Really Windy 8491
 17037339 V D A R Lass 5700

W R A Topper U13
W R A Ann 27Y
 17056588 W R A Ann 27R

A A R Really Windy 1205
 VDAR Blackbird 2031
 VDAR Legend 1281
 VDAR Lass 0234

H A Topper 7015
 W R A Sarah 139P
 W R A Aristocrat M1
 W R A Ann 27H

BEPD	BW
-0.4 .32	68
WEPD	205
+58 .21	639
YEPD	WR
+102 .20	104
MILK	365
+21 .09	1247
	YR
	107

★ We consider the dam of A25 to be our top young Topper daughter, and her mother is the Pathfinder 27R cow who is the dam of Lot 62. His performance is outstanding (104 WWR, 107 YWR) and his maternal heritage is second to none. A25 has the volume, capacity, and fleshing ability needed to work in low input production systems.

65
HEAD
QUARTERS

WRA Really Windy A30

Calved 2/23/13

Bull 17645817

Tattoo: A30

V D A R Really Windy 4097
V D A R Really Windy 8491
 17037339 V D A R Lass 5700

W R A Vindicator W2
W R A Sarah 37Y
 17056595 W R A Sarah 36W

A A R Really Windy 1205
 VDAR Blackbird 2031
 VDAR Legend 1281
 VDAR Lass 0234

KG 5594 Traveler 3020
 W R A Eileen Bar 115P
 Nichols Extra K205
 W R A Sarah 36S

BEPD	BW
-1.0 .32	75
WEPD	205
+53 .22	635
YEPD	WR
+99 .21	103
MILK	365
+26 .09	1273
	YR
	109

★ A terrific combination of low birthweight, high performance genetics are found in Lot 65. His individual performance speaks for itself (103 WWR, 109 YWR), and he is an attractive, well balanced, smooth fronted prospect. The low birth/high performance combination found in his sire, 8491, and maternal grandsire, Vindicator, indicate that A30 will have an excellent chance of siring the same attributes.

*Bobby's great-nephew,
 Alex is eager to run
 over anything in his
 way!*



Reference Sire



Benfield Full Day 099

Calved 10/22/10

Bull 16762595

Tattoo: 099

GDAR Game Day 449
#14691231 G D A R Miss Wix 474

Jauer Java 8136
Benfield Edella 1105
14177734 Benfield Edella 7813

A A R New Trend
S V F Forever Lady 57D
Tehama Band 207
G D A R Miss Wix 749
Jauer 7111 Traveler 546 9239
Jauer 6807 Traveler 310 085
Gardens Genesis 3151 S1
B F F Edella 5405

BEPD	
-1.7	.49
WEPD	
+52	.39
YEPD	
+93	.36
MILK	
+20	.26

★ Full Day is a natural calf of Benfield Edella 1105 by GDAR Game Day 449. We expected him to sire moderate framed low birth weight progeny with adequate growth and superior females that are easy keeping. Unfortunately, we lost Full Day to injury so the sons in this year's sale will be the first and the last to sell. We underestimated his potential to sire growth as the bulls and heifers in his only crop had a weaning ratio of 102.



Benfield Full Day A65

Calved 2/28/13

Bull 17669877

Tattoo: A65

GDAR Game Day 449
Benfield Full Day 099
16762595 Benfield Edella 1105

Benfield Kona 34
Benfield Blackcap 393
#14593724 Benfield Blackcap 9961

Boyd New Day 8005
G D A R Miss Wix 474
Jauer Java 8136
Benfield Edella 7813
H A Intrepid 6207
B F F Queen L 7724
Ginger Hill Rainmaker 661
B F F Blackcap 6577

BEPD		BW
+0.7	.34	
WEPD		85
+50	.23	205
YEPD		699
+93	.22	WR
MILK		100
+22	.14	365
		1291
		YR
		105

★ Don't overlook this solid herd bull by Full Day from a productive 11 year old Kona daughter. Benfield Full Day A65 gained among our top bulls post weaning and continues to develop. He will sire abundant growth and muscle to add weaning weight and #1 muscle feeder calves. We recommend you try this bull on cows before using on him heifers. His dam has a weaning ratio of 104 on 9 calves.

Sons of Full Day


67
HEAD
QUARTERS

Benfield Full Day A50

Calved 2/20/13

Bull 17669875

Tattoo: A50

GDAR Game Day 449
Benfield Full Day 099
 16762595 Benfield Edella 1105

H A Image Maker 0415
Benfield Erica 7423
 #15848632 B F F Erica 7704

Boyd New Day 8005
 G D A R Miss Wix 474
 Javier Java 8136
 Benfield Edella 7813
 Hero 6267 of R R 2418
 H A Rito Blackcap 9038
 Gardens Genesis 3151 S1
 Benfield Erica 5234

BEPD		BW
-2.5	.34	69
WEPD		205
+54	.23	725
YEPD		WR
+90	.23	104
		365
MILK		1211
+25	.14	99
		YR

★ This Full Day x Image Maker bull is a multi-dimension outcross herd bull that has impressed us from birth. He is square made and very deep bodied with excellent weaning performance. Maternal value and calving ease are stacked on both sides of his pedigree. Game Day is respected for his daughters. On the bottom side, both his dam and grandam are pathfinders. His dam has raised 5 calves at 92 for birth ratio and 106 for weaning ratio. A50 is a great choice for heifers or cows.

68
HEAD
QUARTERS

Benfield Full Day A94

Calved 4/4/13

Bull 17669888

Tattoo: A94

GDAR Game Day 449
Benfield Full Day 099
 16762595 Benfield Edella 1105

H A Image Maker 0415
Benfield Blackcap 8518
 16207080 Benfield Blackcap 9970

Boyd New Day 8005
 G D A R Miss Wix 474
 Javier Java 8136
 Benfield Edella 7813
 Hero 6267 of R R 2418
 H A Rito Blackcap 9038
 H A Intrepid 6207
 B F F Blackcap 6516

BEPD		BW
-0.5	.34	76
WEPD		205
+52	.23	669
YEPD		WR
+90	.16	96
		365
MILK		1102
+22	.14	NA
		YR

★ If you need to breed a few heifers this year, take a look at A94. He is stacked with calving ease genetics and maternal value. The Image Maker daughters have done a nice job for us. They consistently raise big calves, have excellent feet, plenty of milk and breed back. A maternal brother to A94 by Game Day sold for \$4200 in our 2012 sale.

Females for Sale at Private Treaty

White Ridge Angus: A group of young productive females with calves at side, available April 10, 2014. A group of bred females available this fall. Contact Bobby Grove for more details.

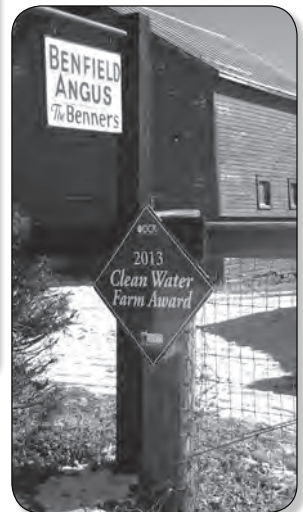
Benfield Angus: Offering 25 bred heifers and 20 young productive cows available October 15, 2014. Contact Don Benner (540) 939- 4608 or email don@benfieldangus.com



Conservation Award



Headwaters Soil and Water Conservation Chairman Rick Shiffet and James Moneymaker present the Conservation Farmer of the Year Award to Benfield Farms at the annual HSWCD awards dinner in the fall of 2013. Accepting the award are Juliana, Madison and Kendall Benner.



Continued from page 5

Selection for High IMF Has Resulted in Low Sex Hormone Breeding Cattle

We have now established why EPDs do a very good job of predicting IMF scores in breeding cattle, but only a fair job of predicting marbling scores in steers. EPDs for IMF are biased in favor of breeding cattle that are low in sex hormones because they have higher IMF scores and biased against breeding cattle that are high in sex hormones because they have lower IMF scores. Low sex hormone breeding cattle have higher IMF scans, and high IMF cattle are retained for breeding because the marketplace currently rewards high IMF cattle, regardless of their ability to produce marbling in steer progeny.

Fertility Problems, Too

It is bad enough that the EPDs for marbling are likely prejudiced (and need to be fixed) but of greater importance is the fact that in the race for high marbling scores the industry has indirectly selected for breeding cattle that are low in sex hormones. Cattle that are low in sex hormones likely have delayed puberty and fertility problems. Fertility is the single most important trait affecting cow-calf producer profitability.

A 1987 study by Post, et al., “Reproductive Performance and Productive Traits of Beef Bulls Selected for Different Levels of Testosterone Response to GnRH,” reported that bulls with the greatest testosterone levels have the highest fertility. Likewise, in a 1996 study of cows from Japanese Black Cattle, Oyama, et al., found that high marbling females were not as fertile as other cows.

Sex hormone levels have a dramatic impact on both fertility and marbling. This is further supported by many anecdotal stories about fertility issues with high marbling Angus genetics.

The Need for Research

The inherent prejudices for the marbling EPD and the documented fertility concerns combine to scream for the need for research into the whole marbling/sex hormone/fertility complex. In addition, since the genomic markers for traits are based from phenotypic

observations, it is questionable whether or not DNA tests for IMF are influenced by sex hormone levels.

REA EPD—Flawed and Misleading

Ribeye area (REA) is evaluated in the real world on a carcass weight basis, according to the Yield Grade (YG) formula. For example, the YG formula states that a 600 pound carcass needs 11.0 square inches of REA to be average, that a 700 pound carcass needs 12.2 square inches of REA to be average, that an 800 pound carcass needs 13.4 square inches of REA to be average, etc. Actual REA above average for a specific carcass weight improves YG while actual REA below average for a specific carcass weight hurts YG. In the real world, REA only has meaning when related to carcass weight.

The REA EPD reports REA at a constant age, without any consideration of the relationship between REA and carcass weight. So, by definition, the REA EPD is flawed because REA at a constant age has no economic relevance. In fact, REA evaluation at a constant age is more closely related to growth than to anything else. Many light muscled, high growth Angus bulls have very positive REA EPDs. EPDs indicate that REA is increasing in the Angus breed, but when evaluated as it should be—on a carcass weight basis—REA is actually decreasing in the Angus breed.

Just as the USDA Quality Grade formula forms the foundation for the incremental changes in marbling scores that describe the marbling EPD, the YG formula for REA evaluation should be the foundation for reporting the REA EPD, according to the deviation from average for a specific carcass weight.

For example, the YG formula requires a 700 pound carcass to have 12.2 square inches of REA to be average. If a bull has progeny that average 700 pounds of carcass weight and have an average 12.5 square inch REA, then the bull would have a +.3 REA EPD ($12.5 - 12.2 = +.3$). Likewise, if a bull has progeny with an average carcass weight of 700 pounds and 11.9 square inch REA, then that bull would be reported as having a -.3 REA EPD ($11.9 - 12.2 = -.3$).

Fat EPD—Another Blunder

\$Beef rewards cattle that have less backfat at a constant age than their peers. In other words, cattle with less “genetic” backfat are regarded as more valuable. Selection for less “genetic” backfat has little relevance because the desired level of backfat at harvest is determined by management. Cattle are fed until they reach the desired level of fatness, and are then harvested. In the feedlot, fat is more of a management issue than genetic issue. Conversely, the ability of cows to fatten on low input forage is a valuable genetic trait.

If the Fat EPD, as currently formulated, is used to select replacement females that have less fat at a constant age, then the result will be increased frame size, mature weight, and higher maintenance costs. These traits are antagonistic to efficient cow herds. A cow’s ability to store energy reserves (fat) for future use is critical in a low input paradigm.

Carcass EPDs: A Compounding of Errors

Marbling, REA, and fat are major components of \$Beef. The flaws previously discussed contribute to greater errors, variation, potential change, and unexplained variance in the resulting Carcass EPDs and \$Beef Values. Additionally, use of \$Beef when selecting replacements will likely result in negative unintended consequences to the traditionally valued maternal traits of the Angus breed.

Carcass EPDs—Determining the Proper Endpoint

Animal scientists have spent much time discussing the proper endpoint for carcass evaluations. Those discussions focus on three potential endpoints: (1) Age constant, (2) weight constant, and (3) fat constant. Since cattle are not harvested at a constant age or a constant weight, we believe the fat constant endpoint is the most appropriate endpoint and should be adopted for carcass evaluation because a fat constant endpoint most closely reflects timing of harvest by the industry.

In Summary

The use of ultrasound IMF scores in breeding cattle to predict steer marbling scores was adopted in the 1990’s. Levels of sex hormones impact marbling scores, yet no research has ever been done to quantify and adjust for sex hormone levels in IMF evaluations. This practice has led to the selection of breeding cattle that are high for IMF and likely low in sex hormones. Low sex hormone breeding cattle can have artificially inflated Marbling EPDs and fertility problems.

Primarily because of concerns for the sex hormone/marbling/fertility interactions, we have elected not to ultrasound our bulls until research has been conducted that allows for IMF adjustments based on sex hormone levels. We believe the current system produces flawed Marbling EPDs and rewards breeding cattle that are low in sex hormones.

There is a clear need for research into the marbling/sex hormone/fertility issue and there is clear need for restructuring the REA EPD. We hope these issues will be addressed appropriately in the near future.



18th Annual

**HEAD
QUARTERS
F O R
HIND
QUARTERS**

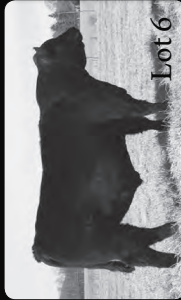
Angus Bull Sale

Saturday, March 15, 2014, 1:00 PM

Rockingham County Fairgrounds, Harrisonburg, Virginia

www.benfield-whiteridge.com

Selling 68 Heavy Muscled, Balanced Trait Angus Bulls



Lot 6



Lot 14



Lot 18



Lot 31



Lot 39



Lot 41

HEADQUARTERS for HINDQUARTERS

Benfield Farms, Inc.
2503 Deerfield Valley Road
Deerfield, VA 24432

ADDRESS SERVICE REQUESTED

FIRST CLASS MAIL

DATED MATERIAL

PRST First Class
US Postage
PAID
Boelte-Hall LLC